



1. Installation equipment

Mounting rails, holders and bases, power fuse holder, edge protectors

200



2. Grounding equipment

Grounding tape and terminals, grounding bands, potential equalizing bus bars

203



3. Cable and wire equipment

Markers and cable labelling systems, cable terminals, presses, mounting elements, glands, mounting bands, insulating hoses, thermo-shrinkable hoses, spiral hoses

205

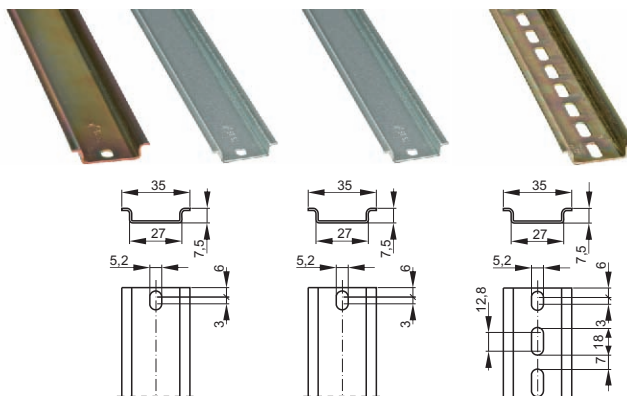


4. Extension cord with differential current switch URB

227

Steel mounting rails

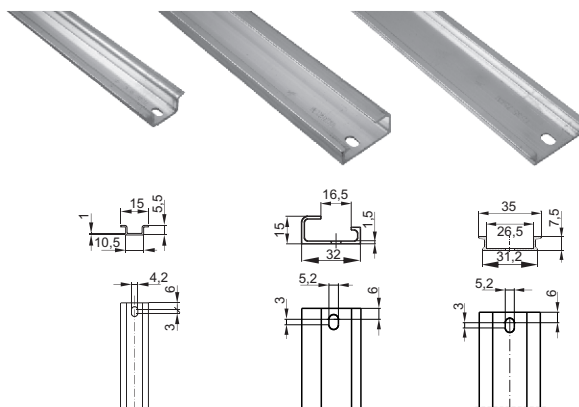
Other rail lengths and non-standard holes available on request



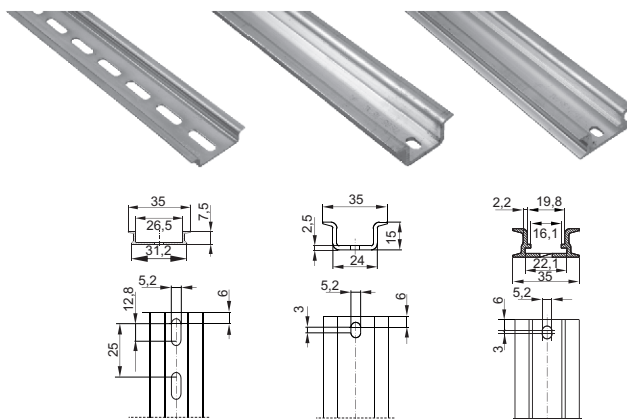
TYPE		TS35	TS35 spec. II	TS35-P
Catalogue number	0,5m 1m 2m	43-7020 / 43-6020 43-7010 / 43-6010 43-7990 / —	— 43-7013 43-7993	— 43-7014 / 43-6014 43-7994 / —
Passivation colour		white ○/yellow ●	—	white ○/yellow ●
Standard		EN 50022	EN 50022	EN 50022
Rail material		steel	galvanized steel	steel
Galvanic coating		Zn	—	Zn
Package		10pcs.	10pcs.	10pcs.

Aluminium mounting rails

Other rail lengths and non-standard holes available on request

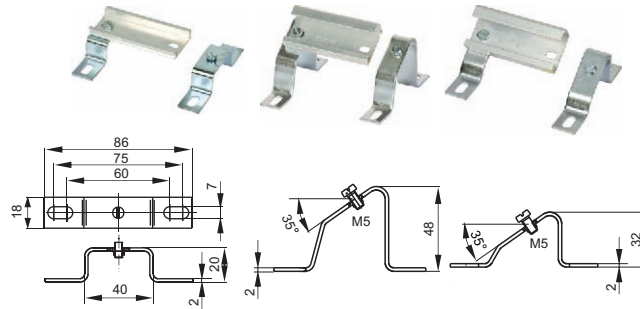


TYPE		TS15/AL	TS32/AL	TS35-7,5/AL
Catalogue number	0,5m 1m 2m	43-0020 43-0010 —	43-5020 43-5010 —	43-9020 43-9010 —
Standard		EN 50045	EN 50035	EN 50022
Rail material		aluminium	aluminium	aluminium
Package		10pcs.	10pcs.	10pcs.



TYPE		TS35-7,5/AL-P	TS35-15/AL	TS2x35/AL
Catalogue number	0,5m 1m 2m	— 43-9014 —	43-8020 43-8010 43-8990	— 43-9018 —
Standard		EN 50022	EN 50022	EN 50022
Material		aluminium	aluminium	aluminium
Package		10pcs.	10pcs.	10pcs.

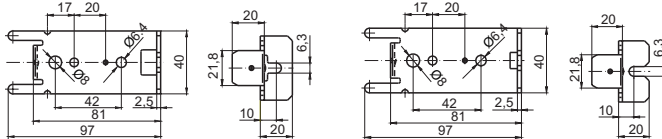
Mounting holders for rails



TYPE	01	02	03
Catalogue number	45-2410	45-2420	45-2430
Package	26pcs.	16pcs.	26pcs.
Material	steel	steel	steel
Galvanic coating	Zn	Zn	Zn

Mounting holders

Mounting holders are designed for fixing mounting rails (without any additional screws, mounting the rails on holders) TS2x35/AL in switchboxes.



TYPE	04	05
Catalogue number	45-2440	45-2450
Package	10pcs.	10pcs.
Material	steel	steel
Galvanic coating	Zn	Zn

Power fuse holder

Power fuse holder is designed for inserting and removing power fuses with the following sizes 00, 0, 1, 2, 3 from fuse bases.



Catalogue number	39-0100
Standard	IEC 60269-1
Rated voltage	690V
Weight	105g
Package	20pcs.

Edge protector: OKB

Use: cable and wire protection in passages through holes cut out in metal plates. Firmly attaches to the metal plate edge, also without gluing. Delivers good shielding and effective insulation, protects cables and wires against damage.

Other applications:

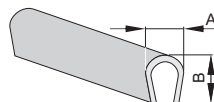
- protection of rough edges,
- cable penetrations in sheet walls,
- decorative element,
- sealing of covers, doors.

Material: PVC, self-extinguishing, conforming to the Directive 2002/95/EC Attestation: UL.

Temperature: -30...+70°C

Cat. no.	Type	Sheet gauge	A	B	Package
52-000	OKB-0,5	0,4...0,6mm	4mm	6mm	50rm
52-001	OKB-1	0,7...1,1mm	4,5mm	8mm	50rm
52-002	OKB-1,5	1,2...1,6mm	5mm	9mm	50rm
52-003	OKB-2	1,7...2,2mm	5,5mm	10mm	50rm
52-004	OKB-2,5	2,3...2,6mm	6mm	12mm	50rm
52-005	OKB-3	2,7...3,3mm	6,5mm	13mm	50rm
52-006	OKB-4	3,4...4,3mm	7mm	14mm	25rm
52-007	OKB-5	4,4...5,3mm	9,5mm	19mm	25rm
52-008	OKB-6	5,4...6,5mm	11mm	22mm	25rm

- yellow-1 ●
- white-2 ○
- black-3 ●
- blue-6 ●
- red-7 ●
- grey-8 ●
- violet-F ●



Edge protector perforated OKB-N

OKB-N protectors are used for protecting cables, cords and conductors against damage at passages through the partition plates. For protection of cables in cable penetrations through sheet walls. Thanks to the notch they allow to create cable penetrations with irregular shapes, oval and round with small diameters.

Material: PVC, self-extinguishing, conforming to the Directive 2002/95/EC Attestation: UL.

Temperature: -30...+70°C

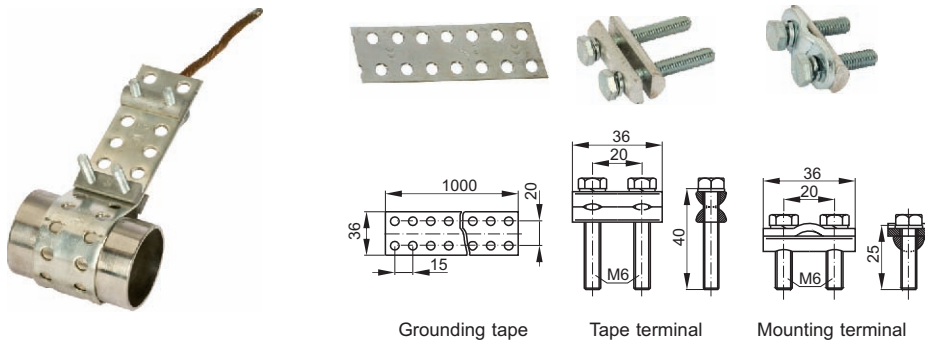
Cat. no.	Type	Sheet gauge	A	B	Package
52-100	OKB-N-0,5	0,4...0,6mm	4mm	6mm	50rm
52-101	OKB-N-1	0,7...1,1mm	4,5mm	8mm	50rm
52-102	OKB-N-1,5	1,2...1,6mm	5mm	9mm	50rm
52-103	OKB-N-2	1,7...2,2mm	5,5mm	10mm	50rm
52-104	OKB-N-2,5	2,3...2,6mm	6mm	12mm	50rm
52-105	OKB-N-3	2,7...3,3mm	6,5mm	13mm	50rm

- yellow-1 ●
- white-2 ○
- black-3 ●
- blue-6 ●
- red-7 ●
- grey-8 ●
- violet-F ●

ELECTROTECHNICAL EQUIPMENT

Grounding tape, tape terminal, mounting terminal

Grounding tape (copper) is designed for grounding connections. The tape is crimped on pipes with the diameters from 30 to 300 mm, tape length approx. 1000mm using a tape terminal ZT-1. Copper wires of the maximum cross-section of 35mm² can be attached to the grounding tape using the mounting terminal ZM-1. The tape can be cut to sizes required to encircle the pipe.



Grounding tape Tape terminal Mounting terminal

TYPE	TU-1	ZT-1	ZM-1
Catalogue number	14-5100	14-5200	14-5300
Standard	IEC 60947-7-2	IEC 60947-7-2	IEC 60947-7-2
Package	10pcs.	10pcs.	10pcs.

Grounding bands

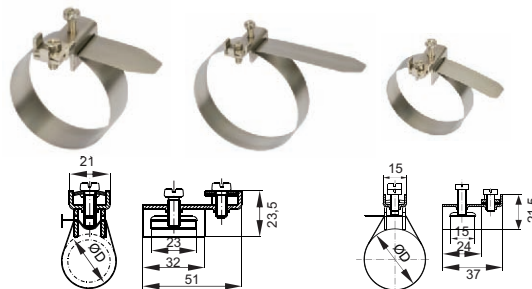
Grounding band is designed for grounding connections in **mild corrosive environments** (dry and heated rooms, not polluted with exhaust gases, industrial gases and sea water mist). The band can be crimped on pipes using two M6 screws; the available pipe diameters are given in the table. Copper wires with the maximum cross-section of 16mm² can be attached to the terminal. The tape of the band is made of corrosion-resistant steel; the terminal and washer are made of galvanized steel with zinc coat. The grounding bands belong to the group of elements used for equalizing connections in buildings to guarantee the effectiveness of the protection against electric shock.



TYPE	18-60	60-120
Catalogue number	14-5410	14-5420
Standard	IEC 60947-7-2	IEC 60947-7-2
Nominal connectivity	1,5...16mm ²	1,5...16mm ²
Pipe diameter range Ø	18...60mm	60...120mm
Terminal torque moment	2,5Nm	2,5Nm
Weight	53g	58g
Package	8pcs.	4pcs.

Grounding bands: OU

Grounding band is designed for making grounding connections in **severe corrosive environments** (wet rooms, polluted with exhaust gases, industrial gases and sea water mist). The band can be crimped on pipes using a M6 screw; the available pipe diameters are given in the table. PE* wires with the maximum cross-section of 16mm² can be attached to the terminal. The tape of the band is made of corrosion-resistant steel whereas the terminal and washer are made of galvanized steel with zinc coat. The possibility of use in rugged operating conditions is confirmed by the results of the performed corrosion tests according to PN-EN 50164-2 (test with sulphur dioxide with general moisture condensation and cyclic test in salt mist). The grounding bands belong to the group of elements used for equalizing connections in buildings to guarantee the effectiveness of the protection against electric shock.



TYPE	OU-1	OU-2	OU-3
Catalogue number	14-5610	14-5620	14-5630
Standard	IEC 60947-7-2 EN 50164-2	IEC 60947-7-2 EN 50164-2	IEC 60947-7-2 EN 50164-2
Nominal connectivity	1,5...16mm ²	1,5...16mm ²	1,5...6mm ²
Pipe diameter range Ø	18...60mm	60...120mm	12...52mm
Terminal torque moment	2,5Nm	2,5Nm	2,5Nm
Weight	57g	65g	28g
Package	5pcs.	5pcs.	10pcs.

* PE - designed for use with steel circuits only

Potential-equalizing bus bars

Bus bars SWP-G1, SWP-G2 with grounding bands are a group of elements necessary for equalizing connection in a building.

The SWP-G1 bus bar is designed for making major equalizing connections. A bus bar connects the following elements:

- protective wires of an electrical system
- all metal installation runs coming to the building (potable water pipes, hot water pipes, central heating pipes, gas pipes, etc.)
- all natural and artificial earthing (foundation, lightning earth, etc.)
- metal structures and building reinforcement.

The bus bar has 10x 35mm² terminals and one additional terminal for the connection of a flat bar (hoop iron) 4x30mm. Steel terminals (Fe/Zn) can be arranged in any configuration on the brass rail (Mo/Sn).

Bus bar SWP-G2 is designed for making additional, local equalizing connections (e.g. in a bathroom).

A bus bar connects the following elements:

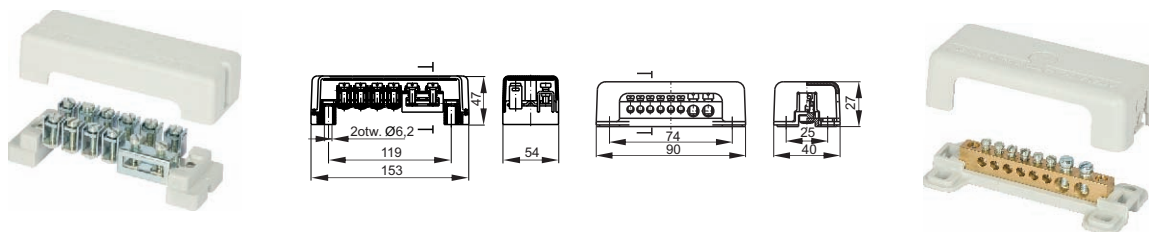
- all conducting parts and protective wires
- protective wires of the electrical system that enter the bathroom
- metal water pipes, central heating pipes, gas pipes, etc.
- metal bath tubs and footbaths
- elements of the building structure and other metal parts that may make contact with water.

The bus bar contains 6 terminals for the connection of wires with the cross-sections of 1.5...6mm² and 2 terminals for wires with the cross-sections of 6...25mm².

Both bus bars are fixed to the base using screws. The terminals are protected by plastic covers (ABS). There are plates on the inside of covers which can be used for simple and clear labelling of individual terminals. The bus bars contain holes that enable sealing.

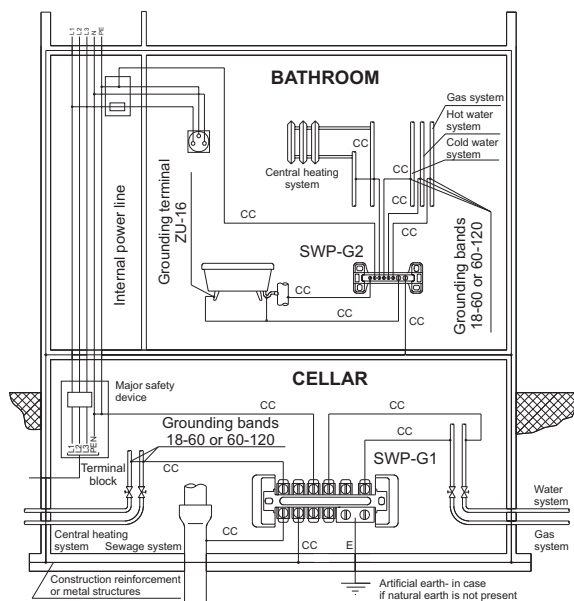
The grounding bands and tapes are designed for connecting pipes with equalizing wires. The bands can be placed on metal pipes with diameters of 18...60mm and 60...120mm, to which the equalizing wires with the maximum cross-section of 16mm² can be attached. Grounding tapes are used for pipes with diameters of 30...300mm.

Wires with cross-sections of 35 mm² can be attached to the tapes. Bus bars, bands and tapes are made of materials protected against corrosion.



TYPE	SWP-G1	SWP-G2
Catalogue number	14-6108	14-6208
Standard	IEC 60947-7-2	IEC 60947-7-2
Nominal cross-section	35mm ²	25mm ²
Nominal connectivity: wire/tape	10x 4...35mm ² 1x (4x 30)mm	6x 6mm ² 2x 25mm
Terminal torque moment	—	—
Insulating material	ABS	ABS
Ambient temperature	-25...+55°C	-25...+55°C
Weight	301g	56g
Package	12pcs.	6pcs.

EXAMPLE OF EQUALIZING CONNECTIONS IN BUILDINGS



CC - equalizer conductor, E - earthing conductor

ELECTROTECHNICAL EQUIPMENT

Technical data

Insulating material	PVC, self-extinguishing, conforming to the Directive 2002/95/EC
Standard	IEC 60.227
Attestation	BBJ-SEP, UL, Polish Register of Shipping
Colour	● yellow, black print ●

Small sets of MZ type markers for wires and cables

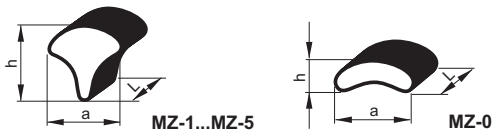
Sets of MZ type markers are intended for addressing the wires and cables in bundles led to terminals. Small sets of markers contain digits from zero to nine only. The markers are resistant to liquid fuels, oils, acids and solvents. Ambient temperature range: -30...+100°C



Cat. no.	Type	Wire cross-section	Wire outside Ø	Dimensions (a / h / L)	Print	Package
51-01Z0	MZ-0	0,15...1mm	1,1...2,5mm	6 / 3 / 5mm	"0"... "9"	300pcs.
51-11Z0	MZ-1	0,5...2,5mm	1,7...4,1mm	6 / 7 / 5mm	"0"... "9"	300pcs.
51-21Z0	MZ-2	2,5...6mm	3...6,5mm	7 / 9 / 5mm	"0"... "9"	300pcs.
51-31Z0	MZ-3	6...35mm	6...11mm	10 / 16 / 5mm	"0"... "9"	300pcs.
51-41Z0	MZ-4	16...70mm	10...16mm	14 / 21 / 5mm	"0"... "9"	300pcs.

MZ type markers for conductors and cables

MZ type markers are intended for addressing the conductors and cables in bundles led to terminals. Made of self-extinguishing yellow material with black print in the form of perforated hose which enables tearing off single symbols. The markers are resistant to liquid fuels, oils, acids and solvents. Ambient temperature range: -30...+100°C



Type	Wire cross-section	Wire outside Ø	Dimensions (a / h / L)	Weight (1000pcs.)
MZ-0	0,15...1mm	1,1...2,5mm	6 / 3 / 5mm	0,08kg
MZ-1	0,5...2,5mm	1,7...4,1mm	6 / 7 / 5mm	0,1kg
MZ-2	2,5...6mm	3...6,5mm	7 / 9 / 5mm	0,15kg
MZ-3	6...35mm	6...11mm	10 / 16 / 5mm	0,3kg
MZ-4	16...70mm	10...16mm	14 / 21 / 5mm	0,6kg
MZ-5	70...150mm	15...20mm	16 / 25 / 5mm	0,9kg

Cat. no.	Print	Cat. no.	Print	Cat. no.	Print	Cat. no.	Print	Cat. no.	Print	Cat. no.	Print	Pckg.
51-□10=	"="	51-□10A	"A"	51-□10V	"V"	51-□10p	"p"	51-□1D0	"1...10"	51-□1S0	"201...210"	250pcs.
51-□10:	":"	51-□10B	"B"	51-□10W	"W"	51-□10r	"r"	51-□1D1	"11...20"	51-□1S1	"211...220"	250pcs.
51-□10,	","	51-□10C	"C"	51-□10X	"X"	51-□10s	"s"	51-□1D2	"21...30"	51-□1S2	"221...230"	250pcs.
51-□10;	";"	51-□10D	"D"	51-□10Y	"Y"	51-□10t	"t"	51-□1D3	"31...40"	51-□1S3	"231...240"	250pcs.
51-□10+	"+"	51-□10E	"E"	51-□10Z	"Z"	51-□10u	"u"	51-□1D4	"41...50"	51-□1S4	"241...250"	250pcs.
51-□10-	"-"	51-□10F	"F"	51-□10a	"a"	51-□10v	"v"	51-□1D5	"51...60"	51-□1S5	"251...260"	250pcs.
51-□10/	"/"	51-□10G	"G"	51-□10b	"b"	51-□10w	"w"	51-□1D6	"61...70"	51-□1S6	"261...270"	250pcs.
51-□10~	"~"	51-□10H	"H"	51-□10c	"c"	51-□10x	"x"	51-□1D7	"71...80"	51-□1S7	"271...280"	250pcs.
51-□1MA	"↓"	51-□10I	"I"	51-□10d	"d"	51-□10y	"y"	51-□1D8	"81...90"	51-□1S8	"281...290"	250pcs.
51-□1PE	"PE"	51-□10J	"J"	51-□10e	"e"	51-□10z	"z"	51-□1D9	"91...100"	51-□1S9	"291...300"	250pcs.
51-□1L1	"L1"	51-□10K	"K"	51-□10f	"f"	51-□100	"0"	51-□1H0	"101...110"	51-□1T0	"301...310"	250pcs.
51-□1L2	"L2"	51-□10L	"L"	51-□10g	"g"	51-□101	"1"	51-□1H1	"111...120"	51-□1T1	"311...320"	250pcs.
51-□1L3	"L3"	51-□10M	"M"	51-□10h	"h"	51-□102	"2"	51-□1H2	"121...130"	51-□1T2	"321...330"	250pcs.
51-□1PP	"PEN"	51-□10N	"N"	51-□10i	"i"	51-□103	"3"	51-□1H3	"131...140"	51-□1T3	"331...340"	250pcs.
51-□1LX	"L1,L2,L3"	51-□10O	"O"	51-□10j	"j"	51-□104	"4"	51-□1H4	"141...150"	51-□1T4	"341...350"	250pcs.
51-□10.	"."	51-□10P	"P"	51-□10k	"k"	51-□105	"5"	51-□1H5	"151...160"	51-□1T5	"351...360"	250pcs.
51-□1BN	no print	51-□10R	"R"	51-□10l	"l"	51-□106	"6"	51-□1H6	"161...170"	51-□1T6	"361...370"	250pcs.
—	—	51-□10S	"S"	51-□10m	"m"	51-□107	"7"	51-□1H7	"171...180"	51-□1T7	"371...380"	250pcs.
—	—	51-□10T	"T"	51-□10n	"n"	51-□108	"8"	51-□1H8	"181...190"	51-□1T8	"381...390"	250pcs.
—	—	51-□10U	"U"	51-□10o	"o"	51-□109	"9"	51-□1H9	"191...200"	51-□1T9	"391...400"	250pcs.

MZ-0 - 0
MZ-1 - 1
MZ-2 - 2
MZ-3 - 3
MZ-4 - 4
MZ-5 - 5

MZ-0 - 0
MZ-1 - 1
MZ-2 - 2
MZ-3 - 3
MZ-4 - 4
MZ-5 - 5

MZ-0 - 0
MZ-1 - 1
MZ-2 - 2
MZ-3 - 3
MZ-4 - 4
MZ-5 - 5

MZ-0 - 0
MZ-1 - 1
MZ-2 - 2
MZ-3 - 3
MZ-4 - 4
MZ-5 - 5

MZ-0 - 0
MZ-1 - 1
MZ-2 - 2
MZ-3 - 3
MZ-4 - 4
MZ-5 - 5

MZ-0 - 0
MZ-1 - 1
MZ-2 - 2
MZ-3 - 3
MZ-4 - 4
MZ-5 - 5

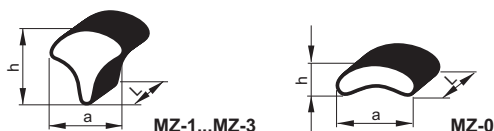
MZ

Technical data

Insulating material	PVC, self-extinguishing, conforming to the Directive 2002/95/EC
Standard	IEC 60.227-BBJ-SEP
Attestation	BBJ-SEP, UL
Colour	● yellow

MZ type addressing ends

MZ type markers without print, available in three lengths: 15, 20 and 30mm.

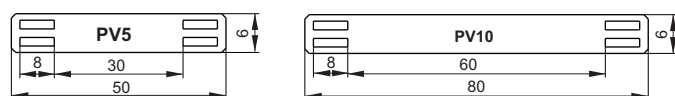


Cat. no.	Type	Wire cross-section	Dimensions (a / h / L) mm	Weight (1000pcs.)	Package
51-90□1	MZ-0	1,1...2,5mm	6 / 3 / L	0,08kg	1000, 500, 200pcs.
51-91□1	MZ-1	1,7...4,1mm	6 / 7 / L	0,1kg	1000, 500, 200pcs.
51-92□1	MZ-2	3...6,5mm	7 / 9 / L	0,15kg	1000, 500, 200pcs.
51-93□1	MZ-3	6...11mm	10 / 16 / L	0,3kg	1000, 500, 200pcs.

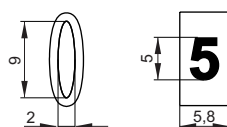
0 for L=15
1 for L=20
2 for L=30

OV labelling system for cable bundles

The markers are intended for labelling cables, pipes, wire bundles, etc. The label consists of PV black base and OV yellow tags (black print). The markers are applied individually on the base to create the required print. The complete arrangement is fixed to the cable using TK or TY tape. Bases and markers are made of PVC resistant to typical solvents, greases, oils, sea water, moulds, etc. The print is big, well visible, embedded in the profile material, and chemically protected against abrasion. Can be used for bundles and cables of the diameter above 200mm.



Cat. no.	Type	OV6 tag qty.	Package
63-3013	PV5	max 5	100pcs.
63-3023	PV10	max 10	100pcs.



Cat. no.	Type	Print	Package
63-310A	OV6	"AB...Z"	100pcs.
63-310a	OV6	"ab...z"	100pcs.
63-3100	OV6	"01...9"	100pcs.
63-310+	OV6	"+"	100pcs.
63-310-	OV6	"-"	100pcs.
63-310.	OV6	"."	100pcs.
63-310;	OV6	";"	100pcs.
63-310:	OV6	":"	100pcs.
63-310~	OV6	"~"	100pcs.
63-31MA	OV6	"↓"	100pcs.
63-31BN	OV6	no print	100pcs.

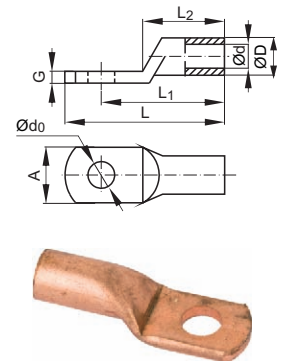
ELECTROTECHNICAL EQUIPMENT

Copper cable terminals

K type terminals for moulding on copper wires

Terminals with $\varnothing d_0$ holes according the client's requirements can be made. We also produce tin-plated cable terminals from K2,5/SN to K625/SN.

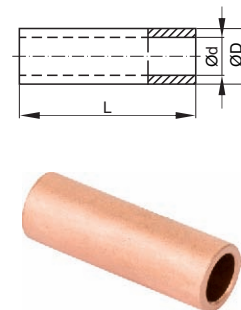
Cat. no.	Type	Cross-section	L	L ₁	L ₂	$\varnothing d$	$\varnothing D$	$\varnothing d_0$	A	G	Package
71-0000	K10	10mm ²	30mm	23mm	16mm	5mm	7mm	6,5mm	10mm	2mm	100pcs.
71-0100	K16	16mm ²	43mm	33mm	23mm	6mm	8,5mm	6,5mm	12mm	2,7mm	100pcs.
71-0200	K25	25mm ²	48mm	36mm	24mm	7mm	10mm	8,5mm	16,5mm	2,3mm	100pcs.
71-0300	K35	35mm ²	50mm	38mm	25mm	8mm	12mm	8,5mm	17,5mm	3,2mm	100pcs.
71-0500	K50	50mm ²	57mm	44mm	31mm	10mm	14mm	10,5mm	20mm	3,8mm	50pcs.
71-0700	K70	70mm ²	60mm	47mm	34mm	11mm	16,4mm	10,5mm	24mm	4mm	50pcs.
71-0900	K95	95mm ²	66mm	53mm	39mm	13mm	18mm	10,5mm	25mm	5mm	25pcs.
71-1200	K120	120mm ²	78mm	62mm	45mm	15mm	20mm	13mm	28,5mm	5mm	25pcs.
71-1500	K150	150mm ²	85mm	68mm	51mm	17mm	21mm	13mm	31,5mm	4mm	25pcs.
71-1800	K185	185mm ²	90mm	73mm	56mm	18mm	24mm	17mm	34mm	6mm	10pcs.
71-2400	K240	240mm ²	101mm	81mm	60mm	21mm	28mm	17mm	40mm	7mm	10pcs.



Z type terminals for moulding on copper wires

We also produce tin-plated blocks from Z10/SN to Z625/SN.

Cat. no.	Type	Cross-section	L	$\varnothing D$	$\varnothing d$	Package
72-0000	Z10	10mm ²	26mm	7mm	5mm	100pcs.
72-0100	Z16	16mm ²	28mm	8,5mm	5,5mm	100pcs.
72-0200	Z25	25mm ²	32mm	11mm	7mm	100pcs.
72-0300	Z35	35mm ²	38mm	12mm	8,5mm	100pcs.
72-0500	Z50	50mm ²	42mm	14mm	10mm	50pcs.
72-0700	Z70	70mm ²	46mm	16,4mm	12mm	50pcs.
72-0900	Z95	95mm ²	52mm	18mm	13mm	50pcs.
72-1200	Z120	120mm ²	63mm	20mm	15mm	50pcs.
72-1500	Z150	150mm ²	67mm	21mm	16,5mm	50pcs.
72-1800	Z185	185mm ²	73mm	24mm	18mm	10pcs.
72-2400	Z240	240mm ²	84mm	28mm	21mm	10pcs.

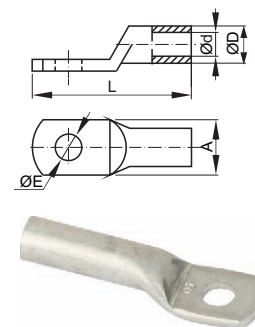


Aluminium cable terminals

Aluminium cable terminals: 2KAm

Aluminium tubular cable terminals type 2KAm are designed for moulding on aluminium wires.

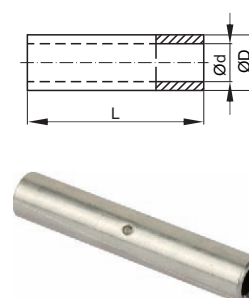
Cat. no.	Type	Cross-section	$\varnothing E$	L	A	$\varnothing D$	$\varnothing d$	Package
74-0100	2KAM16	16mm ²	6,5mm	49mm	16mm	9,2mm	5,2mm	50pcs.
74-0200	2KAM25	25mm ²	8,5mm	58mm	20mm	10,4mm	6,4mm	50pcs.
74-0300	2KAM35	35mm ²	8,5mm	62mm	20mm	12mm	7,6mm	50pcs.
74-0500	2KAM50	50mm ²	10,5mm	74mm	24mm	14mm	9,2mm	50pcs.
74-0700	2KAM70	70mm ²	10,5mm	77mm	26mm	15,6mm	10,6mm	50pcs.
74-0900	2KAM95	95mm ²	10,5mm	90mm	26mm	18mm	12,8mm	50pcs.
74-1200	2KAM120	120mm ²	13mm	104mm	28mm	19,7mm	14,3mm	50pcs.
74-1500	2KAM150	150mm ²	17mm	118mm	34mm	22mm	16,2mm	20pcs.
74-1800	2KAM185	185mm ²	17mm	130mm	38mm	24mm	17,8mm	20pcs.
74-2400	2KAM240	240mm ²	17mm	134mm	40mm	28,2mm	20,2mm	20pcs.



Aluminium tubular cable terminals: 2ZA

Aluminium tubular cable type 2ZA terminals are intended for moulding on aluminium wires with the nominal cross-sections of 16...240mm².

Cat. no.	Type	Cross-section	L	$\varnothing D$	$\varnothing d$	Package
75-0100	2ZA16	16mm ²	47mm	9,2mm	5,2mm	50pcs.
75-0200	2ZA25	25mm ²	57mm	10,4mm	6,4mm	50pcs.
75-0300	2ZA35	35mm ²	63mm	12mm	7,6mm	50pcs.
75-0500	2ZA50	50mm ²	76mm	14mm	9,2mm	50pcs.
75-0700	2ZA70	70mm ²	84mm	15,6mm	10,6mm	50pcs.
75-0900	2ZA95	95mm ²	96mm	18mm	12,8mm	50pcs.
75-1200	2ZA120	120mm ²	110mm	19,7mm	14,3mm	50pcs.
75-1500	2ZA150	150mm ²	118mm	22mm	16,2mm	20pcs.
75-1800	2ZA185	185mm ²	126mm	24mm	17,8mm	20pcs.
75-2400	2ZA240	240mm ²	136mm	28,2mm	20,2mm	20pcs.

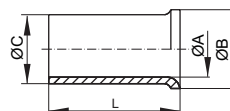


Thin-walled cable terminals

Thin-walled sleeve terminals without insulation H

Material: copper (galvanic tin-plating)

Cat. no.	Type	Cross-section	ØA	ØB	ØC	L	Package
76-7010	H0,14/7	0,14mm ²	0,7mm	1,6mm	1,0mm	7mm	100pcs.
76-7020	H0,25/5	0,25mm ²	0,8mm	1,7mm	1,1mm	5mm	100pcs.
76-7030	H0,25/7	0,25mm ²	0,8mm	1,7mm	1,1mm	7mm	100pcs.
76-7040	H0,34/5	0,34mm ²	0,9mm	1,8mm	1,2mm	5mm	100pcs.
76-7050	H0,34/7*	0,34mm ²	0,9mm	1,8mm	1,2mm	7mm	100pcs.
76-7060	H0,5/6	0,5mm ²	1,0mm	2,1mm	1,3mm	6mm	100pcs.
76-7070	H0,5/8*	0,5mm ²	1,0mm	2,1mm	1,3mm	8mm	100pcs.
76-7080	H0,5/10	0,5mm ²	1,0mm	2,1mm	1,3mm	10mm	100pcs.
76-7090	H0,5/12	0,5mm ²	1,0mm	2,1mm	1,3mm	12mm	100pcs.
76-7100	H0,75/6	0,75mm ²	1,2mm	2,3mm	1,5mm	6mm	100pcs.
76-7110	H0,75/8*	0,75mm ²	1,2mm	2,3mm	1,5mm	8mm	100pcs.
76-7120	H0,75/10	0,75mm ²	1,2mm	2,3mm	1,5mm	10mm	100pcs.
76-7130	H0,75/12	0,75mm ²	1,2mm	2,3mm	1,5mm	12mm	100pcs.
76-7140	H1/6	1,0mm ²	1,4mm	2,5mm	1,7mm	6mm	100pcs.
76-7150	H1/8*	1,0mm ²	1,4mm	2,5mm	1,7mm	8mm	100pcs.
76-7160	H1/10	1,0mm ²	1,4mm	2,5mm	1,7mm	10mm	100pcs.
76-7170	H1/12	1,0mm ²	1,4mm	2,5mm	1,7mm	12mm	100pcs.
76-7180	H1,5/7	1,5mm ²	1,7mm	2,8mm	2,0mm	6mm	100pcs.
76-7190	H1,5/10*	1,5mm ²	1,7mm	2,8mm	2,0mm	10mm	100pcs.
76-7200	H1,5/12	1,5mm ²	1,7mm	2,8mm	2,0mm	12mm	100pcs.
76-7210	H1,5/15	1,5mm ²	1,7mm	2,8mm	2,0mm	15mm	100pcs.
76-7510	H1,5/18	1,5mm ²	1,7mm	2,8mm	2,0mm	18mm	100pcs.
76-7220	H2,5/7*	2,5mm ²	2,2mm	3,4mm	2,5mm	7mm	100pcs.
76-7230	H2,5/10	2,5mm ²	2,2mm	3,4mm	2,5mm	10mm	100pcs.
76-7240	H2,5/12	2,5mm ²	2,2mm	3,4mm	2,5mm	12mm	100pcs.
76-7250	H2,5/15	2,5mm ²	2,2mm	3,4mm	2,5mm	15mm	100pcs.
76-7260	H4/9	4mm ²	2,8mm	4,0mm	3,2mm	9mm	100pcs.
76-7270	H4/12	4mm ²	2,8mm	4,0mm	3,2mm	12mm	100pcs.
76-7280	H4/15	4mm ²	2,8mm	4,0mm	3,2mm	15mm	100pcs.
76-7520	H4/18	4mm ²	2,8mm	4,0mm	3,2mm	18mm	100pcs.
76-7290	H6/10	6mm ²	3,5mm	4,7mm	3,9mm	10mm	100pcs.
76-7300	H6/12	6mm ²	3,5mm	4,7mm	3,9mm	12mm	100pcs.
76-7310	H6/15	6mm ²	3,5mm	4,7mm	3,9mm	15mm	100pcs.
76-7320	H6/18	6mm ²	3,5mm	4,7mm	3,9mm	18mm	100pcs.
76-7530	H6/20	6mm ²	3,5mm	4,7mm	3,9mm	20mm	100pcs.
76-7330	H10/12*	10mm ²	4,5mm	5,8mm	4,9mm	12mm	100pcs.
76-7340	H10/15	10mm ²	4,5mm	5,8mm	4,9mm	15mm	100pcs.
76-7350	H10/18	10mm ²	4,5mm	5,8mm	4,9mm	18mm	100pcs.
76-7540	H10/20	10mm ²	4,5mm	5,8mm	4,9mm	20mm	100pcs.
76-7360	H16/12*	16mm ²	5,8mm	7,5mm	6,2mm	12mm	100pcs.
76-7370	H16/15	16mm ²	5,8mm	7,5mm	6,2mm	15mm	100pcs.
76-7380	H16/18	16mm ²	5,8mm	7,5mm	6,2mm	18mm	100pcs.
76-7550	H16/20	16mm ²	5,8mm	7,5mm	6,2mm	20mm	100pcs.
76-7390	H25/12	25mm ²	7,3mm	9,5mm	7,7mm	12mm	100pcs.
76-7400	H25/15	25mm ²	7,3mm	9,5mm	7,7mm	15mm	100pcs.
76-7560	H25/18	25mm ²	7,3mm	9,5mm	7,7mm	18mm	100pcs.
76-7410	H25/20	25mm ²	7,3mm	9,5mm	7,7mm	20mm	100pcs.
76-7560	H25/22	25mm ²	7,3mm	9,5mm	7,7mm	22mm	100pcs.
76-7580	H25/25	25mm ²	7,3mm	9,5mm	7,7mm	25mm	100pcs.
76-7420	H35/18	35mm ²	8,3mm	11mm	8,7mm	20mm	100pcs.
76-7430	H35/20	35mm ²	8,3mm	11mm	8,7mm	22mm	100pcs.
76-7440	H35/25	35mm ²	8,3mm	11mm	8,7mm	25mm	100pcs.
76-7590	H50/20*	50mm ²	10,3mm	13mm	10,9mm	20mm	100pcs.
76-7450	H50/22	50mm ²	10,3mm	13mm	10,9mm	22mm	100pcs.
76-7460	H70/25	70mm ²	12,5mm	15mm	13,3mm	25mm	100pcs.
76-7470	H95/30*	95mm ²	14,5mm	17mm	15,3mm	30mm	100pcs.
76-7600	H95/32	95mm ²	14,5mm	17mm	15,3mm	32mm	100pcs.
76-7610	H120/32*	120mm ²	16,5mm	19mm	17,5mm	32mm	1pc.
76-7480	H120/34	120mm ²	16,5mm	19mm	17,5mm	34mm	1pc.
76-7620	H150/32*	150mm ²	18,5mm	21mm	19,5mm	32mm	1pc.
76-7490	H150/38	150mm ²	18,5mm	21mm	19,5mm	38mm	1pc.



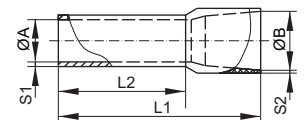
ELECTROTECHNICAL EQUIPMENT

HI type thin-walled sleeve terminals with insulation

Material: copper (galvanic tin-plating)

Insulation: polyamide

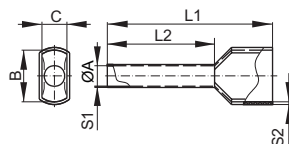
Cat. no.	Type	Cross-section	ØA	ØB	S1	S2	L1	L2	Package	Colour
76-8010	HI0,14/6	0,14mm ²	0,7mm	1,6mm	0,12mm	0,20mm	10,4mm	6mm	100pcs.	● grey
76-8030	HI0,25/6	0,25mm ²	0,8mm	2mm	0,25mm	0,25mm	10,5mm	6mm	100pcs.	● blue
76-8020	HI0,25/8*	0,25mm ²	0,8mm	2mm	0,25mm	0,25mm	12,5mm	8mm	100pcs.	● blue
76-8040	HI0,34/6	0,34mm ²	0,8mm	2mm	0,25mm	0,25mm	10,5mm	6mm	100pcs.	● turquoise
76-8050	HI0,34/8*	0,34mm ²	0,8mm	2mm	0,25mm	0,25mm	12,5mm	8mm	100pcs.	● turquoise
76-8070	HI0,5/6	0,5mm ²	1,0mm	2,6mm	0,15mm	0,25mm	12mm	6mm	100pcs.	● orange
76-8060	HI0,5/8*	0,5mm ²	1,0mm	2,6mm	0,15mm	0,25mm	14mm	8mm	100pcs.	● orange
76-8080	HI0,5/10	0,5mm ²	1,0mm	2,6mm	0,15mm	0,25mm	16mm	10mm	100pcs.	● orange
76-8090	HI0,75/6	0,75mm ²	1,2mm	2,8mm	0,15mm	0,25mm	10,4mm	6mm	100pcs.	○ white
76-8100	HI0,75/8*	0,75mm ²	1,2mm	2,8mm	0,15mm	0,25mm	10,4mm	8mm	100pcs.	○ white
76-8110	HI0,75/10	0,75mm ²	1,2mm	2,8mm	0,15mm	0,25mm	10,4mm	10mm	100pcs.	○ white
76-8430	HI0,75/12	0,75mm ²	1,2mm	2,8mm	0,15mm	0,25mm	10,4mm	12mm	100pcs.	○ white
76-8130	HI0,1/6	1,0mm ²	1,4mm	3,0mm	0,15mm	0,3mm	12mm	6mm	100pcs.	● yellow
76-8120	HI1/8*	1,0mm ²	1,4mm	3,0mm	0,15mm	0,3mm	14mm	8mm	100pcs.	● yellow
76-8140	HI1/10	1,0mm ²	1,4mm	3,0mm	0,15mm	0,3mm	16mm	10mm	100pcs.	● yellow
76-8150	HI1/12	1,0mm ²	1,4mm	3,0mm	0,15mm	0,3mm	18mm	12mm	100pcs.	● yellow
76-8160	HI1,5/8*	1,5mm ²	1,7mm	3,5mm	0,15mm	0,3mm	14mm	8mm	100pcs.	● red
76-8170	HI1,5/10	1,5mm ²	1,7mm	3,5mm	0,15mm	0,3mm	16mm	10mm	100pcs.	● red
76-8180	HI1,5/12	1,5mm ²	1,7mm	3,5mm	0,15mm	0,3mm	18mm	12mm	100pcs.	● red
76-8190	HI1,5/18	1,5mm ²	1,7mm	3,5mm	0,15mm	0,3mm	24mm	18mm	100pcs.	● red
76-8200	HI2,5/8*	2,5mm ²	2,2mm	4,2mm	0,15mm	0,3mm	15mm	8mm	100pcs.	● blue
76-8210	HI2,5/10	2,5mm ²	2,2mm	4,2mm	0,15mm	0,3mm	17mm	10mm	100pcs.	● blue
76-8220	HI2,5/12	2,5mm ²	2,2mm	4,2mm	0,15mm	0,3mm	19mm	12mm	100pcs.	● blue
76-8230	HI2,5/18	2,5mm ²	2,2mm	4,2mm	0,15mm	0,3mm	25mm	18mm	100pcs.	● blue
76-8240	HI4/9*	4mm ²	2,8mm	4,8mm	0,2mm	0,3mm	16mm	9mm	100pcs.	● grey
76-8250	HI4/12	4mm ²	2,8mm	4,8mm	0,2mm	0,3mm	20mm	12mm	100pcs.	● grey
76-8260	HI4/18	4mm ²	2,8mm	4,8mm	0,2mm	0,3mm	25mm	18mm	100pcs.	● grey
76-8270	HI6/12*	6mm ²	0,7mm	1,6mm	0,2mm	0,3mm	20mm	12mm	100pcs.	● black
76-8280	HI6/18	6mm ²	0,7mm	1,6mm	0,2mm	0,3mm	26mm	18mm	100pcs.	● black
76-8290	HI10/12*	10mm ²	4,5mm	7,6mm	0,2mm	0,4mm	21mm	12mm	100pcs.	○ ivory
76-8480	HI10/15	10mm ²	4,5mm	7,6mm	0,2mm	0,4mm	24mm	15mm	100pcs.	○ ivory
76-8300	HI10/18	10mm ²	4,5mm	7,6mm	0,2mm	0,4mm	27mm	18mm	100pcs.	○ ivory
76-8310	HI16/12*	16mm ²	5,8mm	8,8mm	0,2mm	0,4mm	23mm	12mm	100pcs.	● green
76-8320	HI16/18	16mm ²	5,8mm	8,8mm	0,2mm	0,4mm	29mm	18mm	100pcs.	● green
76-8330	HI25/16*	25mm ²	7,3mm	11,2mm	0,2mm	0,5mm	29mm	16mm	50pcs.	● brown
76-8340	HI25/22	25mm ²	7,3mm	11,2mm	0,2mm	0,5mm	35mm	22mm	50pcs.	● brown
76-8350	HI35/16*	35mm ²	8,3mm	12,7mm	0,2mm	0,55mm	30mm	16mm	50pcs.	○ beige
76-8360	HI35/25	35mm ²	8,3mm	12,7mm	0,2mm	0,55mm	39mm	25mm	50pcs.	○ beige
76-8370	HI50/20*	50mm ²	10,3mm	15mm	0,35mm	0,6mm	36mm	20mm	50pcs.	○ olive
76-8380	HI50/25	50mm ²	10,3mm	15mm	0,35mm	0,6mm	41mm	25mm	50pcs.	○ olive
76-8390	HI70/20	70mm ²	35mm	16mm	0,4mm	0,6mm	37mm	20mm	50pcs.	● yellow
76-8400	HI95/25	95mm ²	14,5mm	18,5mm	0,4mm	0,6mm	44mm	25mm	50pcs.	● red
76-8410	HI120/27	120mm ²	16,5mm	20,7mm	0,4mm	0,65mm	50mm	27mm	1pc.	● blue
76-8420	HI150/32	150mm ²	19,5mm	23mm	0,45mm	0,9mm	58mm	32mm	1pc.	● yellow



Type HI2x thin-walled sleeve terminals with insulation

Material: copper (galvanic tin-plating)

Insulation: polyamide



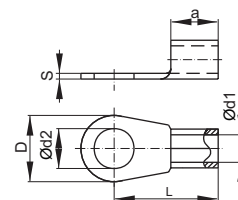
Cat. no.	Type	Cross-section	ØA	B	C	S1	S2	L1	L2	Package	Colour
77-1010	HI2X0,5	2x 0,5mm ²	1,4mm	5mm	3mm	0,15mm	0,25mm	14,4mm	8mm	100pcs.	● orange
77-1020	HI2X0,75	2x 0,75mm ²	1,7mm	5,4mm	2,8mm	0,15mm	0,25mm	15,2mm	8,2mm	100pcs.	○ white
77-1030	HI2X1	2x 1mm ²	2,05mm	5,5mm	3mm	0,15mm	0,3mm	15,6mm	8,2mm	100pcs.	● yellow
77-1040	HI2X1,5	2x 1,5mm ²	2,3mm	6,4mm	3,4mm	0,15mm	0,3mm	16,2mm	8,2mm	100pcs.	● red
77-1050	HI2X2,5	2x 2,5mm ²	2,9mm	8mm	4,2mm	0,15mm	0,3mm	18,5mm	10mm	100pcs.	● blue
77-1060	HI2X4	2x 4mm ²	3,7mm	8,8mm	5mm	0,15mm	0,3mm	23mm	12mm	100pcs.	● grey
77-1070	HI2X6	2x 6mm ²	4,8mm	9,7mm	6,2mm	0,20mm	0,5mm	26mm	14mm	100pcs.	● black
77-1080	HI2X10	2x 10mm ²	6,4mm	12,5mm	7,5mm	0,20mm	0,5mm	16mm	14mm	100pcs.	○ ivory
77-1090	HI2X16	2x 16mm ²	8,3mm	18,5mm	9,5mm	0,30mm	0,5mm	30mm	16mm	50pcs.	● green

* stands for basic version of terminal length

KO eyelet terminals

Material: copper (galvanic tin-plating)

Cat. no.	Type	Cross-section	Terminal	Ød1	Ød2	D	L	a	s	Package
77-2010	KO0,5/2	0,1...0,5mm ²	M2	1,3mm	2,3mm	5mm	10mm	4mm	0,5mm	100pcs.
77-2020	KO0,5/2,5	0,1...0,5mm ²	M2,5	1,3mm	2,8mm	5mm	10mm	4mm	0,5mm	100pcs.
77-2030	KO0,5/3	0,1...0,5mm ²	M3	1,3mm	3,2mm	5mm	10mm	4mm	0,5mm	100pcs.
77-2040	KO0,5/3,5	0,1...0,5mm ²	M3,5	1,3mm	3,7mm	6,5mm	10mm	4mm	0,5mm	100pcs.
77-2050	KO0,5/4	0,1...0,5mm ²	M4	1,3mm	4,3mm	7mm	10mm	4mm	0,5mm	100pcs.
77-2060	KO0,5/5	0,1...0,5mm ²	M5	1,3mm	5,3mm	8mm	10mm	4mm	0,5mm	100pcs.
77-2070	KO1/2,5	0,5...1mm ²	M2,5	1,6mm	2,8mm	6mm	11mm	5mm	0,8mm	100pcs.
77-2080	KO1/3	0,5...1mm ²	M3	1,6mm	3,2mm	6mm	11mm	5mm	0,8mm	100pcs.
77-2090	KO1/3,5	0,5...1mm ²	M3,5	1,6mm	3,7mm	6mm	11mm	5mm	0,8mm	100pcs.
77-2100	KO1/4	0,5...1mm ²	M4	1,6mm	4,3mm	8mm	12mm	5mm	0,8mm	100pcs.
77-2110	KO1/5	0,5...1mm ²	M5	1,6mm	5,3mm	10mm	13mm	5mm	0,8mm	100pcs.
77-2120	KO1/6*	0,5...1mm ²	M6	1,6mm	6,5mm	11mm	15mm	5mm	0,8mm	100pcs.
77-2130	KO1/8*	0,5...1mm ²	M8	1,6mm	8,4mm	14mm	17mm	5mm	0,8mm	100pcs.
77-2140	KO1/10*	0,5...1mm ²	M10	1,6mm	10,5mm	18mm	19mm	5mm	0,8mm	100pcs.
77-2150	KO2,5/3	1,5...2,5mm ²	M3	2,3mm	3,2mm	6mm	11mm	5mm	0,8mm	100pcs.
77-2160	KO2,5/3,5	1,5...2,5mm ²	M3,5	2,3mm	3,7mm	6mm	11mm	5mm	0,8mm	100pcs.
77-2170	KO2,5/4	1,5...2,5mm ²	M4	2,3mm	4,3mm	8mm	12mm	5mm	0,8mm	100pcs.
77-2180	KO2,5/5	1,5...2,5mm ²	M5	2,3mm	5,3mm	10mm	14mm	5mm	0,8mm	100pcs.
77-2190	KO2,5/6	1,5...2,5mm ²	M6	2,3mm	6,5mm	11mm	16mm	5mm	0,8mm	100pcs.
77-2200	KO2,5/8	1,5...2,5mm ²	M8	2,3mm	8,4mm	14mm	17mm	5mm	0,8mm	100pcs.
77-2210	KO2,5/10*	1,5...2,5mm ²	M10	2,3mm	10,5mm	15mm	17mm	5mm	0,8mm	100pcs.
77-2220	KO2,5/12*	1,5...2,5mm ²	M12	2,3mm	13mm	18mm	18mm	5mm	0,8mm	100pcs.
77-2230	KO6/4	4...6mm ²	M4	3,6mm	4,3mm	8mm	14mm	6mm	1mm	100pcs.
77-2240	KO6/5	4...6mm ²	M5	3,6mm	5,3mm	10mm	15mm	6mm	1mm	100pcs.
77-2250	KO6/6	4...6mm ²	M6	3,6mm	6,5mm	11mm	16mm	6mm	1mm	100pcs.
77-2260	KO6/8	4...6mm ²	M8	3,6mm	8,4mm	14mm	19mm	6mm	1mm	100pcs.
77-2270	KO6/10	4...6mm ²	M10	3,6mm	10,5mm	18mm	21mm	6mm	1mm	100pcs.
77-2280	KO6/12*	4...6mm ²	M12	3,6mm	13mm	18mm	21mm	6mm	1mm	100pcs.
77-2290	KO10/5	10mm ²	M5	4,5mm	5,3mm	10mm	16mm	8mm	1,1mm	100pcs.
77-2300	KO10/6	10mm ²	M6	4,5mm	6,5mm	11mm	17mm	8mm	1,1mm	100pcs.
77-2310	KO10/8	10mm ²	M8	4,5mm	8,4mm	14mm	20mm	8mm	1,1mm	100pcs.
77-2320	KO10/10	10mm ²	M10	4,5mm	10,5mm	18mm	21mm	8mm	1,1mm	100pcs.
77-2330	KO10/12	10mm ²	M12	4,5mm	13mm	22mm	23mm	8mm	1,1mm	100pcs.
77-2340	KO16/5	16mm ²	M5	5,8mm	5,3mm	11mm	20mm	10mm	1,2mm	100pcs.
77-2350	KO16/6	16mm ²	M6	5,8mm	6,5mm	11mm	20mm	10mm	1,2mm	100pcs.
77-2360	KO16/8	16mm ²	M8	5,8mm	8,4mm	14mm	23mm	10mm	1,2mm	100pcs.
77-2370	KO16/10	16mm ²	M10	5,8mm	10,5mm	18mm	24mm	10mm	1,2mm	100pcs.
77-2380	KO16/12	16mm ²	M12	5,8mm	13mm	22mm	26mm	10mm	1,2mm	100pcs.
77-2390	KO25/5	25mm ²	M5	7,5mm	5,3mm	12mm	25mm	11mm	1,5mm	100pcs.
77-2400	KO25/6	25mm ²	M6	7,5mm	6,5mm	12mm	25mm	11mm	1,5mm	100pcs.
77-2410	KO25/8	25mm ²	M8	7,5mm	8,4mm	16mm	25mm	11mm	1,5mm	100pcs.
77-2420	KO25/10	25mm ²	M10	7,5mm	10,5mm	18mm	26mm	11mm	1,5mm	100pcs.
77-2430	KO25/12	25mm ²	M12	7,5mm	13mm	22mm	31mm	11mm	1,5mm	100pcs.
77-2440	KO25/16	25mm ²	M16	7,5mm	17mm	28mm	35mm	11mm	1,5mm	100pcs.
77-2450	KO35/6	35mm ²	M6	9mm	6,5mm	15mm	26mm	12mm	1,6mm	100pcs.
77-2460	KO35/8	35mm ²	M8	9mm	8,4mm	16mm	26mm	12mm	1,6mm	100pcs.
77-2470	KO35/10	35mm ²	M10	9mm	10,5mm	18mm	27mm	12mm	1,6mm	100pcs.
77-2480	KO35/12	35mm ²	M12	9mm	13mm	22mm	31mm	12mm	1,6mm	100pcs.
77-2490	KO35/16	35mm ²	M16	9mm	17mm	28mm	36mm	12mm	1,6mm	100pcs.
77-2500	KO50/6	50mm ²	M6	11mm	6,5mm	18mm	34mm	16mm	1,8mm	100pcs.
77-2510	KO50/8	50mm ²	M8	11mm	8,4mm	18mm	34mm	16mm	1,8mm	100pcs.
77-2520	KO50/10	50mm ²	M10	11mm	10,5mm	18mm	34mm	16mm	1,8mm	100pcs.
77-2530	KO50/12	50mm ²	M12	11mm	13mm	22mm	36mm	16mm	1,8mm	100pcs.
77-2540	KO50/16	50mm ²	M16	11mm	17mm	28mm	40mm	16mm	1,8mm	100pcs.
77-2550	KO70/6	70mm ²	M6	13mm	6,5mm	22mm	38mm	18mm	2mm	100pcs.
77-2560	KO70/8	70mm ²	M8	13mm	8,4mm	22mm	38mm	18mm	2mm	100pcs.
77-2570	KO70/10	70mm ²	M10	13mm	10,5mm	22mm	38mm	18mm	2mm	100pcs.
77-2580	KO70/12	70mm ²	M12	13mm	13mm	22mm	38mm	18mm	2mm	100pcs.
77-2590	KO70/16	70mm ²	M16	13mm	17mm	28mm	42mm	18mm	2mm	100pcs.
77-2600	KO95/8	95mm ²	M8	15mm	8,4mm	24mm	42mm	20mm	2,5mm	100pcs.
77-2610	KO95/10	95mm ²	M10	15mm	10,5mm	24mm	42mm	20mm	2,5mm	100pcs.
77-2620	KO95/12	95mm ²	M12	15mm	13mm	24mm	42mm	20mm	2,5mm	100pcs.
77-2630	KO95/16	95mm ²	M16	15mm	17mm	24mm	44mm	20mm	2,5mm	100pcs.
77-2640	KO120/8	120mm ²	M8	16,5mm	8,4mm	28mm	44mm	22mm	3mm	50pcs.
77-2650	KO120/10	120mm ²	M10	16,5mm	10,5mm	24mm	44mm	22mm	3mm	50pcs.
77-2660	KO120/12	120mm ²	M12	16,5mm	13mm	24mm	44mm	22mm	3mm	50pcs.
77-2670	KO120/16	120mm ²	M16	16,5mm	17mm	24mm	48mm	22mm	3mm	50pcs.
77-2680	KO150/10	150mm ²	M10	19mm	10,5mm	28mm	50mm	24mm	3,2mm	50pcs.
77-2690	KO150/12	150mm ²	M12	19mm	13mm	30mm	50mm	24mm	3,2mm	50pcs.
77-2700	KO150/16	150mm ²	M16	19mm	17mm	30mm	50mm	24mm	3,2mm	50pcs.
77-2710	KO185/12	185mm ²	M12	21mm	13mm	30mm	50mm	28mm	3,5mm	25pcs.
77-2720	KO185/16	185mm ²	M16	21mm	17mm	36mm	50mm	28mm	3,5mm	25pcs.
77-2730	KO240/12	240mm ²	M12	23,5mm	13mm	36mm	56mm	32mm	4mm	25pcs.
77-2740	KO240/16	240mm ²	M16	23,5mm	17mm	38mm	56mm	35mm	4mm	25pcs.
77-2750	KO300/10	300mm ²	M10	27,5mm	10,5mm	38mm	69mm	35mm	4,5mm	25pcs.
77-2760	KO300/12	300mm ²	M12	27,5mm	13mm	50mm	69mm	35mm	4,5mm	25pcs.
77-2770	KO300/16	300mm ²	M16	27,5mm	17mm	50mm	69mm	35mm	4,5mm	25pcs.
77-2780	KO300/20	300mm ²	M20	27,5mm	21mm	50mm	69mm	35mm	4,5mm	25pcs.



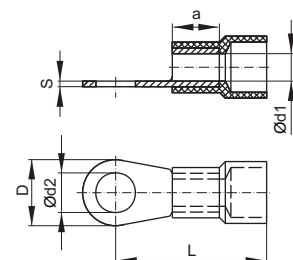
ELECTROTECHNICAL EQUIPMENT

KOI insulated eyelet terminals

Material: copper (galvanic tin-plating)

Insulation: polyamide 6.6

Cat. no.	Type	Cross-section	Terminal	Ød1	Ød2	D	L	a	s	Package
77-3010	KOI0,5/2	0,1...0,5mm ²	M2	1,3mm	2,3mm	5mm	14mm	4mm	0,5mm	100pcs.
77-3020	KOI0,5/2,5	0,1...0,5mm ²	M2,5	1,3mm	2,8mm	5mm	14mm	4mm	0,5mm	100pcs.
77-3030	KOI0,5/3	0,1...0,5mm ²	M3	1,3mm	3,2mm	5mm	14mm	4mm	0,5mm	100pcs.
77-3040	KOI0,5/3,5	0,1...0,5mm ²	M3,5	1,3mm	3,7mm	6,5mm	14mm	4mm	0,5mm	100pcs.
77-3050	KOI0,5/4	0,1...0,5mm ²	M4	1,3mm	4,3mm	7mm	14mm	4mm	0,5mm	100pcs.
77-3060	KOI0,5/5	0,1...0,5mm ²	M5	1,3mm	5,3mm	8mm	14mm	4mm	0,5mm	100pcs.
77-3070	KOI1/2,5	0,5...1mm ²	M2,5	1,6mm	2,8mm	6mm	16mm	5mm	0,8mm	100pcs.
77-3080	KOI1/3	0,5...1mm ²	M3	1,6mm	3,2mm	6mm	16mm	5mm	0,8mm	100pcs.
77-3090	KOI1/3,5	0,5...1mm ²	M3,5	1,6mm	3,7mm	6mm	16mm	5mm	0,8mm	100pcs.
77-3100	KOI1/4	0,5...1mm ²	M4	1,6mm	4,3mm	8mm	17mm	5mm	0,8mm	100pcs.
77-3110	KOI1/5	0,5...1mm ²	M5	1,6mm	5,3mm	10mm	18mm	5mm	0,8mm	100pcs.
77-3120	KOI1/6*	0,5...1mm ²	M6	1,6mm	6,5mm	11mm	18mm	5mm	0,8mm	100pcs.
77-3130	KOI1/8*	0,5...1mm ²	M8	1,6mm	8,4mm	14mm	22mm	5mm	0,8mm	100pcs.
77-3140	KOI1/10*	0,5...1mm ²	M10	1,6mm	10,5mm	14mm	22mm	5mm	0,8mm	100pcs.
77-3150	KOI1/12*	0,5...1mm ²	M12	1,6mm	13mm	18mm	24mm	5mm	0,8mm	100pcs.
77-3160	KOI2,5/3	1,5...2,5mm ²	M3	2,3mm	3,2mm	6mm	17mm	5mm	0,8mm	100pcs.
77-3170	KOI2,5/3,5	1,5...2,5mm ²	M3,5	2,3mm	3,7mm	6mm	17mm	5mm	0,8mm	100pcs.
77-3180	KOI2,5/4	1,5...2,5mm ²	M4	2,3mm	4,3mm	8mm	18mm	5mm	0,8mm	100pcs.
77-3190	KOI2,5/5	1,5...2,5mm ²	M5	2,3mm	5,3mm	10mm	20mm	5mm	0,8mm	100pcs.
77-3200	KOI2,5/6	1,5...2,5mm ²	M6	2,3mm	6,5mm	11mm	22mm	5mm	0,8mm	100pcs.
77-3210	KOI2,5/8	1,5...2,5mm ²	M8	2,3mm	8,4mm	14mm	23mm	5mm	0,8mm	100pcs.
77-3220	KOI2,5/10*	1,5...2,5mm ²	M10	2,3mm	10,5mm	15mm	23mm	5mm	0,8mm	100pcs.
77-3230	KOI2,5/12*	1,5...2,5mm ²	M12	2,3mm	13mm	18mm	24mm	5mm	0,8mm	100pcs.
77-3240	KOI6/3,5*	4...6mm ²	M3,5	3,6mm	3,7mm	8mm	20mm	6mm	1mm	100pcs.
77-3250	KOI6/4*	4...6mm ²	M4	3,6mm	4,3mm	8mm	20mm	6mm	1mm	100pcs.
77-3260	KOI6/5*	4...6mm ²	M5	3,6mm	5,3mm	10mm	21mm	6mm	1mm	100pcs.
77-3270	KOI6/6*	4...6mm ²	M6	3,6mm	6,5mm	11mm	22mm	6mm	1mm	100pcs.
77-3280	KOI6/8*	4...6mm ²	M8	3,6mm	8,4mm	14mm	25mm	6mm	1mm	100pcs.
77-3290	KOI6/10	4...6mm ²	M10	3,6mm	10,5mm	18mm	27mm	6mm	1mm	100pcs.
77-3300	KOI6/12	4...6mm ²	M12	3,6mm	13mm	18mm	27mm	6mm	1mm	100pcs.
77-3310	KOI6/16	4...6mm ²	M12	3,6mm	17mm	22mm	29mm	6mm	1mm	100pcs.
77-3320	KOI10/4*	10mm ²	M4	4,5mm	4,3mm	10mm	24mm	8mm	1,1mm	100pcs.
77-3330	KOI10/5	10mm ²	M5	4,5mm	5,3mm	20mm	24mm	8mm	1,1mm	100pcs.
77-3340	KOI10/6	10mm ²	M6	4,5mm	6,5mm	11mm	25mm	8mm	1,1mm	100pcs.
77-3350	KOI10/8	10mm ²	M8	4,5mm	8,4mm	14mm	28mm	8mm	1,1mm	100pcs.
77-3360	KOI10/10	10mm ²	M10	4,5mm	10,5mm	18mm	29mm	8mm	1,1mm	100pcs.
77-3370	KOI10/12	10mm ²	M12	4,5mm	13mm	22mm	31mm	8mm	1,1mm	100pcs.
77-3380	KOI16/5	16mm ²	M5	5,8mm	5,3mm	11mm	30mm	10mm	1,2mm	100pcs.
77-3390	KOI16/6	16mm ²	M6	5,8mm	6,5mm	11mm	30mm	10mm	1,2mm	100pcs.
77-3400	KOI16/8	16mm ²	M8	5,8mm	8,4mm	14mm	32mm	10mm	1,2mm	100pcs.
77-3410	KOI16/10	16mm ²	M10	5,8mm	10,5mm	18mm	34mm	10mm	1,2mm	100pcs.
77-3420	KOI16/12	16mm ²	M12	5,8mm	13mm	22mm	36mm	10mm	1,2mm	100pcs.
77-3430	KOI25/5	25mm ²	M5	7,5mm	5,3mm	12mm	36mm	11mm	1,5mm	100pcs.
77-3440	KOI25/6	25mm ²	M6	7,5mm	6,5mm	12mm	36mm	11mm	1,5mm	100pcs.
77-3450	KOI25/8	25mm ²	M8	7,5mm	8,4mm	16mm	36mm	11mm	1,5mm	100pcs.
77-3460	KOI25/10	25mm ²	M10	7,5mm	10,5mm	18mm	37mm	11mm	1,5mm	100pcs.
77-3470	KOI25/12	25mm ²	M12	7,5mm	13mm	22mm	42mm	11mm	1,5mm	100pcs.
77-3480	KOI25/16	25mm ²	M16	7,5mm	17mm	28mm	46mm	11mm	1,5mm	100pcs.
77-3490	KOI35/6	35mm ²	M6	9mm	6,5mm	15mm	38mm	12mm	1,6mm	100pcs.
77-3500	KOI35/8	35mm ²	M8	9mm	8,4mm	16mm	38mm	12mm	1,6mm	100pcs.
77-3510	KOI35/10	35mm ²	M10	9mm	10,5mm	18mm	39mm	12mm	1,6mm	100pcs.
77-3520	KOI35/12	35mm ²	M12	9mm	13mm	22mm	43mm	12mm	1,6mm	100pcs.
77-3530	KOI35/16	35mm ²	M16	9mm	17mm	28mm	48mm	12mm	1,6mm	100pcs.
77-3540	KOI50/6	50mm ²	M6	11mm	6,5mm	18mm	50mm	16mm	1,8mm	100pcs.
77-3550	KOI50/8	50mm ²	M8	11mm	8,4mm	18mm	50mm	16mm	1,8mm	100pcs.
77-3560	KOI50/10	50mm ²	M10	11mm	10,5mm	18mm	50mm	16mm	1,8mm	100pcs.
77-3570	KOI50/12	50mm ²	M12	11mm	13mm	22mm	52mm	16mm	1,8mm	100pcs.
77-3580	KOI50/16	50mm ²	M16	11mm	17mm	28mm	56mm	16mm	1,8mm	100pcs.
77-3590	KOI70/6	70mm ²	M6	13mm	6,5mm	22mm	54mm	18mm	2mm	100pcs.
77-3600	KOI70/8	70mm ²	M8	13mm	8,4mm	22mm	54mm	18mm	2mm	100pcs.
77-3610	KOI70/10	70mm ²	M10	13mm	10,5mm	22mm	54mm	18mm	2mm	100pcs.
77-3620	KOI70/12	70mm ²	M12	13mm	13mm	22mm	54mm	18mm	2mm	100pcs.
77-3630	KOI70/16	70mm ²	M16	13mm	17mm	28mm	58mm	18mm	2mm	100pcs.
77-3640	KOI95/8	95mm ²	M8	15mm	8,4mm	24mm	57mm	20mm	2,5mm	100pcs.
77-3650	KOI95/10	95mm ²	M10	15mm	10,5mm	24mm	57mm	20mm	2,5mm	100pcs.
77-3660	KOI95/12	95mm ²	M12	15mm	13mm	24mm	57mm	20mm	2,5mm	100pcs.
77-3670	KOI95/16	95mm ²	M16	15mm	17mm	28mm	59mm	20mm	2,5mm	100pcs.
77-3680	KOI120/8	120mm ²	M8	16,5mm	8,4mm	24mm	60mm	22mm	3mm	50pcs.
77-3690	KOI120/10	120mm ²	M10	16,5mm	10,5mm	24mm	60mm	22mm	3mm	50pcs.
77-3700	KOI120/12	120mm ²	M12	16,5mm	13mm	24mm	60mm	22mm	3mm	50pcs.
77-3710	KOI120/16	120mm ²	M16	16,5mm	17mm	28mm	64mm	22mm	3mm	50pcs.



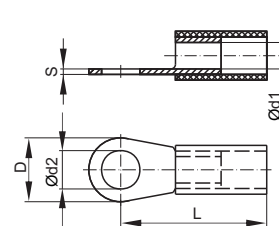
* terminals not covered by the standard

LOI insulated eyelet terminals

Material: copper (galvanic tin-plating)

Insulation: PCV

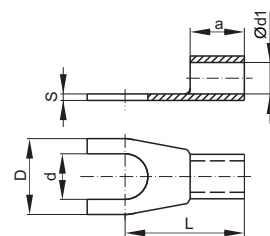
Cat. no.	Type	Cross-section	Terminal	Ød1	Ød2	D	L	s	Package
77-4010	LOI1/2,5	0,5...1mm ²	M2,5	1,6mm	2,8mm	6mm	16mm	0,8mm	100pcs.
77-4020	LOI1/3	0,5...1mm ²	M3	1,6mm	3,2mm	6mm	16mm	0,8mm	100pcs.
77-4030	LOI1/3,5	0,5...1mm ²	M3,5	1,6mm	3,7mm	6mm	16mm	0,8mm	100pcs.
77-4040	LOI1/4	0,5...1mm ²	M4	1,6mm	4,3mm	8mm	17mm	0,8mm	100pcs.
77-4050	LOI1/5	0,5...1mm ²	M5	1,6mm	5,3mm	10mm	18mm	0,8mm	100pcs.
77-4060	LOI1/6	0,5...1mm ²	M6	1,6mm	6,5mm	11mm	20mm	0,8mm	100pcs.
77-4070	LOI1/8	0,5...1mm ²	M8	1,6mm	8,4mm	14mm	22mm	0,8mm	100pcs.
77-4080	LOI1/10	0,5...1mm ²	M10	1,6mm	10,5mm	14mm	24mm	0,8mm	100pcs.
77-4090	LOI2,5/3	1,5...2,5mm ²	M3	2,3mm	3,2mm	6mm	17mm	0,8mm	100pcs.
77-4100	LOI2,5/3,5	1,5...2,5mm ²	M3,5	2,3mm	3,73mm	6mm	17mm	0,8mm	100pcs.
77-4110	LOI2,5/4	1,5...2,5mm ²	M4	2,3mm	4,3mm	8mm	18mm	0,8mm	100pcs.
77-4120	LOI2,5/5	1,5...2,5mm ²	M5	2,3mm	5,3mm	10mm	20mm	0,8mm	100pcs.
77-4130	LOI2,5/6	1,5...2,5mm ²	M6	2,3mm	6,5mm	11mm	22mm	0,8mm	100pcs.
77-4140	LOI2,5/8	1,5...2,5mm ²	M8	2,3mm	8,4mm	14mm	23mm	0,8mm	100pcs.
77-4150	LOI2,5/10	1,5...2,5mm ²	M10	2,3mm	10,5mm	15mm	25mm	0,8mm	100pcs.
77-4160	LOI2,5/12	1,5...2,5mm ²	M12	2,3mm	13,7mm	18mm	26mm	0,8mm	100pcs.
77-4170	LOI6/4	4...6mm ²	M4	3,6mm	4,3mm	8mm	20mm	1mm	100pcs.
77-4180	LOI6/5	4...6mm ²	M5	3,6mm	5,3mm	10mm	21mm	1mm	100pcs.
77-4190	LOI6/6	4...6mm ²	M6	3,6mm	6,5mm	11mm	22mm	1mm	100pcs.
77-4200	LOI6/8	4...6mm ²	M8	3,6mm	8,4mm	14mm	25mm	1mm	100pcs.
77-4210	LOI6/10	4...6mm ²	M10	3,6mm	10,5mm	18mm	27mm	1mm	100pcs.
77-4220	LOI6/12	4...6mm ²	M12	3,6mm	13mm	18mm	32mm	1mm	100pcs.



KW spade terminals

Material: copper (galvanic tin-plating)

Cat. no.	Type	Cross-section	Terminal	Ød1	d	D	L	a	s	Package
77-6010	KW0,5/2	0,1...0,5mm ²	M2	1,3mm	2,3mm	5mm	10mm	4mm	0,5mm	100pcs.
77-6020	KW0,5/2,5	0,1...0,5mm ²	M2,5	1,3mm	2,8mm	5mm	10mm	4mm	0,5mm	100pcs.
77-6030	KW0,5/3	0,1...0,5mm ²	M3	1,3mm	3,2mm	5mm	10mm	4mm	0,5mm	100pcs.
77-6040	KW0,5/3,5	0,1...0,5mm ²	M3,5	1,3mm	3,7mm	6,5mm	10mm	4mm	0,5mm	100pcs.
77-6050	KW0,5/4	0,1...0,5mm ²	M4	1,3mm	4,3mm	7mm	10mm	4mm	0,5mm	100pcs.
77-6060	KW0,5/5	0,1...0,5mm ²	M5	1,3mm	5,3mm	8mm	10mm	4mm	0,5mm	100pcs.
77-6070	KW1/3	0,5...1mm ²	M3	1,6mm	3,2mm	6mm	11mm	5mm	0,8mm	100pcs.
77-6080	KW1/3,5	0,5...1mm ²	M3,5	1,6mm	3,7mm	6mm	11mm	5mm	0,8mm	100pcs.
77-6090	KW1/4*	0,5...1mm ²	M4	1,6mm	4,3mm	6,9mm	12mm	5mm	0,8mm	100pcs.
77-6100	KW1/5	0,5...1mm ²	M5	1,6mm	5,3mm	10mm	13mm	5mm	0,8mm	100pcs.
77-6110	KW1/6	0,5...1mm ²	M6	1,6mm	6,5mm	10mm	13mm	5mm	0,8mm	100pcs.
77-6120	KW1/8	0,5...1mm ²	M8	1,6mm	8,4mm	14mm	17mm	5mm	0,8mm	100pcs.
77-6130	KW1/10	0,5...1mm ²	M10	1,6mm	10,5mm	18mm	17mm	5mm	0,8mm	100pcs.
77-6140	KW1/12	0,5...1mm ²	M12	1,6mm	13mm	20mm	18mm	5mm	0,8mm	100pcs.
77-6150	KW2,5/3	1,5...2,5mm ²	M3	2,3mm	3,2mm	6mm	11mm	5mm	0,8mm	100pcs.
77-6160	KW2,5/3,5	1,5...2,5mm ²	M3,5	2,3mm	3,7mm	6mm	11mm	5mm	0,8mm	100pcs.
77-6170	KW2,5/4*	1,5...2,5mm ²	M4	2,3mm	4,3mm	6,9mm	12mm	5mm	0,8mm	100pcs.
77-6180	KW2,5/5	1,5...2,5mm ²	M5	2,3mm	5,3mm	10mm	14mm	5mm	0,8mm	100pcs.
77-6190	KW2,5/6	1,5...2,5mm ²	M6	2,3mm	6,5mm	11mm	16mm	5mm	0,8mm	100pcs.
77-6200	KW2,5/8	1,5...2,5mm ²	M8	2,3mm	8,4mm	14mm	17mm	5mm	0,8mm	100pcs.
77-6210	KW2,5/10	1,5...2,5mm ²	M10	2,3mm	10,5mm	18mm	19mm	5mm	0,8mm	100pcs.
77-6220	KW2,5/12	1,5...2,5mm ²	M12	2,3mm	13mm	20mm	20mm	5mm	0,8mm	100pcs.
77-6230	KW6/3,5	4...6mm ²	M3,5	3,6mm	3,7mm	8mm	14mm	6mm	1mm	100pcs.
77-6240	KW6/4	4...6mm ²	M4	3,6mm	4,3mm	8mm	14mm	6mm	1mm	100pcs.
77-6250	KW6/5	4...6mm ²	M5	3,6mm	5,3mm	10mm	15mm	6mm	1mm	100pcs.
77-6260	KW6/6*	4...6mm ²	M6	3,6mm	6,5mm	11mm	16mm	6mm	1mm	100pcs.
77-6270	KW6/8	4...6mm ²	M8	3,6mm	8,4mm	14mm	19mm	6mm	1mm	100pcs.
77-6280	KW6/10	4...6mm ²	M10	3,6mm	10,5mm	18mm	21mm	6mm	1mm	100pcs.
77-6290	KW6/12	4...6mm ²	M12	3,6mm	13mm	20mm	22mm	6mm	1mm	100pcs.
77-6300	KW6/16	4...6mm ²	M16	3,6mm	17mm	24mm	25mm	6mm	1mm	100pcs.
77-6310	KW10/5	10mm ²	M5	4,5mm	5,3mm	10mm	16mm	8mm	1,1mm	100pcs.
77-6320	KW10/6	10mm ²	M6	4,5mm	6,5mm	11mm	17mm	8mm	1,1mm	100pcs.
77-6330	KW10/8	10mm ²	M8	4,5mm	8,4mm	14mm	20mm	8mm	1,1mm	100pcs.
77-6340	KW10/10	10mm ²	M10	4,5mm	10,5mm	18mm	21mm	8mm	1,1mm	100pcs.
77-6350	KW16/5	16mm ²	M5	5,8mm	5,3mm	11mm	20mm	10mm	1,2mm	100pcs.
77-6360	KW16/6	16mm ²	M6	5,8mm	6,5mm	11mm	20mm	10mm	1,2mm	100pcs.
77-6370	KW16/8	16mm ²	M8	5,8mm	8,4mm	14mm	22mm	10mm	1,2mm	100pcs.
77-6380	KW16/10	16mm ²	M10	5,8mm	10,5mm	18mm	24mm	10mm	1,2mm	100pcs.

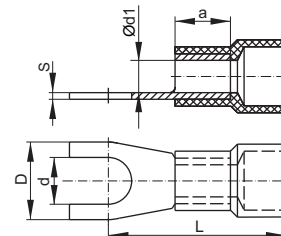


KWI insulated spade terminals

Material: copper (galvanic tin-plating)

Insulation: polyamide 6.6

Cat. no.	Type	Cross-section	Terminal	Ød1	d	D	L	a	s	Package
77-5010	KWI0,5/2	0,1...0,5mm ²	M2	1,3mm	2,3mm	5mm	14mm	4mm	0,5mm	100pcs.
77-5020	KWI0,5/3*	0,1...0,5mm ²	M3	1,3mm	3,2mm	5mm	14mm	4mm	0,5mm	100pcs.
77-5030	KWI0,5/3,5	0,1...0,5mm ²	M3,5	1,3mm	3,7mm	6,5mm	16mm	4mm	0,5mm	100pcs.
77-5040	KWI0,5/4*	0,1...0,5mm ²	M4	1,3mm	4,3mm	7mm	16mm	4mm	0,5mm	100pcs.
77-5050	KWI0,5/5*	0,1...0,5mm ²	M5	1,3mm	5,3mm	8mm	16mm	4mm	0,5mm	100pcs.
77-5060	KWI1/2,5	0,5...1mm ²	M2,5	1,6mm	2,8mm	6mm	16mm	5mm	0,8mm	100pcs.
77-5070	KWI1/3	0,5...1mm ²	M3	1,6mm	3,2mm	6mm	16mm	5mm	0,8mm	100pcs.
77-5080	KWI1/3,5	0,5...1mm ²	M3,5	1,6mm	3,7mm	6mm	16mm	5mm	0,8mm	100pcs.
77-5090	KWI1/4	0,5...1mm ²	M4	1,6mm	4,3mm	8mm	17mm	5mm	0,8mm	100pcs.
77-5100	KWI1/5	0,5...1mm ²	M5	1,6mm	5,3mm	10mm	18mm	5mm	0,8mm	100pcs.
77-5110	KWI1/6	0,5...1mm ²	M6	1,6mm	6,5mm	10mm	18mm	5mm	0,8mm	100pcs.
77-5120	KWI1/8	0,5...1mm ²	M8	1,6mm	8,4mm	14mm	22mm	5mm	0,8mm	100pcs.
77-5130	KWI1/10	0,5...1mm ²	M10	1,6mm	10,5mm	18mm	22mm	5mm	0,8mm	100pcs.
77-5140	KWI1/12	0,5...1mm ²	M12	1,6mm	13mm	20mm	22mm	5mm	0,8mm	100pcs.
77-5150	KWI2,5/3	1,5...2,5mm ²	M3	2,3mm	3,2mm	6mm	17mm	5mm	0,8mm	100pcs.
77-5160	KWI2,5/3,5	1,5...2,5mm ²	M3,5	2,3mm	3,7mm	6mm	17mm	5mm	0,8mm	100pcs.
77-5170	KWI2,5/4	1,5...2,5mm ²	M4	2,3mm	4,3mm	8mm	18mm	5mm	0,8mm	100pcs.
77-5180	KWI2,5/5	1,5...2,5mm ²	M5	2,3mm	5,3mm	10mm	20mm	5mm	0,8mm	100pcs.
77-5190	KWI2,5/6	1,5...2,5mm ²	M6	2,3mm	6,5mm	11mm	22mm	5mm	0,8mm	100pcs.
77-5200	KWI2,5/8	1,5...2,5mm ²	M8	2,3mm	8,4mm	14mm	22mm	5mm	0,8mm	100pcs.
77-5210	KWI2,5/10	1,5...2,5mm ²	M10	2,3mm	10,5mm	18mm	25mm	5mm	0,8mm	100pcs.
77-5220	KWI2,5/12*	1,5...2,5mm ²	M12	2,3mm	13mm	18mm	25mm	5mm	0,8mm	100pcs.
77-5230	KWI6/3,5*	4...6mm ²	M3,5	3,6mm	3,7mm	8mm	20mm	6mm	1mm	100pcs.
77-5240	KWI6/4*	4...6mm ²	M4	3,6mm	4,3mm	8mm	20mm	6mm	1mm	100pcs.
77-5250	KWI6/5*	4...6mm ²	M5	3,6mm	5,3mm	10mm	21mm	6mm	1mm	100pcs.
77-5260	KWI6/6*	4...6mm ²	M6	3,6mm	6,5mm	11mm	22mm	6mm	1mm	100pcs.
77-5270	KWI6/8*	4...6mm ²	M8	3,6mm	8,4mm	14mm	25mm	6mm	1mm	100pcs.
77-5280	KWI6/10	4...6mm ²	M10	3,6mm	10,5mm	18mm	27mm	6mm	1mm	100pcs.
77-5290	KWI6/12	4...6mm ²	M12	3,6mm	13mm	20mm	27mm	6mm	1mm	100pcs.
77-5300	KWI6/16	4...6mm ²	M16	3,6mm	17mm	24mm	30mm	6mm	1mm	100pcs.
77-5310	KWI10/5*	10mm ²	M5	4,5mm	5,3mm	10mm	24mm	8mm	1,1mm	100pcs.
77-5320	KWI10/6*	10mm ²	M6	4,5mm	6,5mm	11mm	25mm	8mm	1,1mm	100pcs.
77-5330	KWI10/8*	10mm ²	M8	4,5mm	8,4mm	14mm	28mm	8mm	1,1mm	100pcs.
77-5340	KWI10/10	10mm ²	M10	4,5mm	10,5mm	18mm	28mm	8mm	1,1mm	100pcs.
77-5350	KWI16/5	16mm ²	M5	5,8mm	5,3mm	11mm	30mm	10mm	1,2mm	100pcs.
77-5360	KWI16/6*	16mm ²	M6	5,8mm	6,5mm	11mm	30mm	10mm	1,2mm	100pcs.
77-5370	KWI16/8*	16mm ²	M8	5,8mm	8,4mm	14mm	32mm	10mm	1,2mm	100pcs.
77-5380	KWI16/10	16mm ²	M10	5,8mm	10,5mm	18mm	34mm	10mm	1,2mm	100pcs.

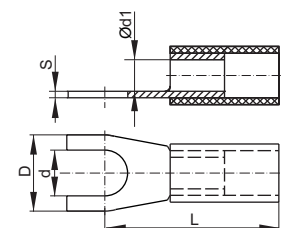


LWI insulated spade terminals

Material: copper (galvanic tin-plating)

Insulation: PCV

Cat. no.	Type	Cross-section	Terminal	Ød1	d	D	L	s	Package
77-7010	LWI1/3	0,5...1mm ²	M3	1,6mm	3,2mm	6mm	16mm	0,8mm	100pcs.
77-7020	LWI1/3,5	0,5...1mm ²	M3,5	1,6mm	3,7mm	6mm	16mm	0,8mm	100pcs.
77-7030	LWI1/4	0,5...1mm ²	M4	1,6mm	4,3mm	8mm	17mm	0,8mm	100pcs.
77-7040	LWI1/5	0,5...1mm ²	M5	1,6mm	5,3mm	10mm	18mm	0,8mm	100pcs.
77-7050	LWI1/6	0,5...1mm ²	M6	1,6mm	6,5mm	10mm	20mm	0,8mm	100pcs.
77-7060	LWI2,5/3	1,5...2,5mm ²	M3	2,3mm	3,2mm	6mm	17mm	0,8mm	100pcs.
77-7070	LWI2,5/3,5	1,5...2,5mm ²	M3,5	2,3mm	3,7mm	6mm	17mm	0,8mm	100pcs.
77-7080	LWI2,5/4	1,5...2,5mm ²	M4	2,3mm	4,3mm	8mm	18mm	0,8mm	100pcs.
77-7090	LWI2,5/5	1,5...2,5mm ²	M5	2,3mm	5,3mm	10mm	20mm	0,8mm	100pcs.
77-7100	LWI2,5/6	1,5...2,5mm ²	M6	2,3mm	6,5mm	10mm	22mm	0,8mm	100pcs.
77-7110	LWI6/4	4...6mm ²	M3	3,6mm	4,3mm	8mm	20mm	1mm	100pcs.
77-7120	LWI6/5	4...6mm ²	M3,5	3,6mm	5,3mm	10mm	21mm	1mm	100pcs.
77-7130	LWI6/6	4...6mm ²	M4	3,6mm	6,5mm	11mm	22mm	1mm	100pcs.
77-7140	LWI6/8	4...6mm ²	M5	3,6mm	8,4mm	14mm	25mm	1mm	100pcs.
77-7150	LWI6/10	4...6mm ²	M6	3,6mm	10,5mm	18mm	27mm	1mm	100pcs.

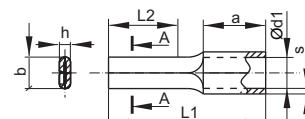
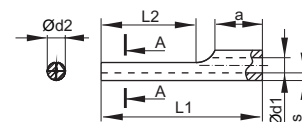


* terminals not covered by the standard

KI pin terminals

Material: copper (galvanic tin-plated)

Cat. no.	Type	Cross-section	Ød1	Ød2	b	n	L1	L2	a	s	Package
77-8010	KI0,5*	0,1...0,5mm ²	1,3mm	1,4mm	—	—	14mm	8mm	5mm	0,5mm	100pcs.
77-8020	KI1	0,5...1mm ²	1,8mm	1,9mm	—	—	17mm	10mm	5mm	0,5mm	100pcs.
77-8030	KI2,5	1,5...2,5mm ²	2,3mm	1,9mm	—	—	17mm	10mm	5mm	0,5mm	100pcs.
77-8040	KI6	4...6mm ²	3,6mm	2,9mm	—	—	20mm	11mm	6mm	0,5mm	100pcs.
77-8050	KI10*	10mm ²	4,3mm	—	4,3mm	2mm	24,5mm	11mm	10mm	0,5mm	100pcs.
77-8060	KI16*	16mm ²	5,4mm	—	5,5mm	2mm	29,5mm	15mm	11,5mm	0,5mm	100pcs.
77-8070	KI25*	25mm ²	6,7mm	—	6,8mm	2,4mm	33,5mm	15mm	13,5mm	0,5mm	100pcs.
77-8080	KI35*	35mm ²	8,2mm	—	8mm	3,2mm	40,5mm	20mm	16mm	0,5mm	50pcs.
77-8090	KI50*	50mm ²	9,5mm	—	9,5mm	3,6mm	45mm	20mm	19mm	0,5mm	50pcs.
77-8100	KI70*	70mm ²	11,2mm	—	11mm	4mm	55mm	23mm	24mm	0,5mm	50pcs.
77-8110	KI95*	95mm ²	13,5mm	—	12,5mm	5mm	55mm	23mm	24mm	0,5mm	50pcs.

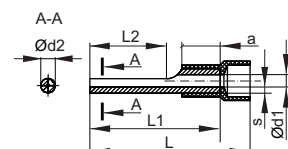


KII insulated pin terminals

Material: copper (galvanic tin-plated)

Insulation: polyamide

Cat. no.	Type	Cross-section	Ød1	Ød2	L	L1	L2	a	s	Package
77-8210	KII0,5*	0,1...0,5mm ²	1,3mm	1,4mm	18mm	14mm	8mm	5mm	0,5mm	100pcs.
77-8220	KII1	0,5...1mm ²	1,8mm	1,9mm	22mm	17mm	10mm	5mm	0,8mm	100pcs.
77-8230	KII2,5	1,5...2,5mm ²	2,3mm	1,9mm	23mm	17mm	10mm	5mm	0,8mm	100pcs.
77-8240	KII6	4...6mm ²	3,6mm	2,9mm	26mm	20mm	11mm	6mm	1mm	100pcs.

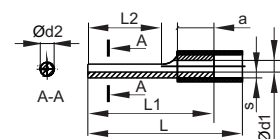


KII PVC insulated pin terminals

Material: copper (galvanic tin-plated)

Insulation: PCV

Cat. no.	Type	Cross-section	Ød1	Ød2	L	L1	L2	a	s	Package
77-8310	KII0,5PCV	0,1...0,5mm ²	1,3mm	1,4mm	18mm	14mm	8mm	5mm	0,5mm	100pcs.
77-8320	KII1PCV	0,5...1mm ²	1,8mm	1,9mm	22mm	17mm	10mm	5mm	0,8mm	100pcs.
77-8330	KII2,5PCV	1,5...2,5mm ²	2,3mm	1,9mm	23mm	17mm	10mm	5mm	0,8mm	100pcs.
77-8340	KII6PCV	4...6mm ²	3,6mm	2,9mm	26mm	20mm	11mm	6mm	1mm	100pcs.



ELECTROTECHNICAL EQUIPMENT

Manual crimping tool K05/6KT/6-50 for copper terminals types K and Z (version: normal)*

TYPE	K05/6KT/6-50
Catalogue number	79-1101
Wire cross-section	6...50mm ²
Length	390mm
Weight	1,1kg



Manual crimping tool K06/6KT/10-120 for copper terminals types K and Z (version: normal)*

TYPE	K06/6KT/10-120
Catalogue number	79-1103
Wire cross-section	10...120mm ²
Length	650mm
Weight	2,9kg



Manual crimping tool K06/6KT/16-120 (AL-c) for copper terminals type 2KAm (version: thin-walled)*

TYPE	K06/6KT/16-120
Catalogue number	79-1104
Wire cross-section	16...120mm ²
Length	650mm
Weight	2,9kg



Manual crimping tool K06F/6KT/25-150 for copper terminals types K and Z (version: normal)*

TYPE	K06/6KT/25-150
Catalogue number	79-1102
Wire cross-section	25...150mm ²
Length	650mm
Weight	2,9kg



Manual crimping tool PZ2,5H/0,5-2,5 for sleeve terminals*

With two identical slots for crimping irrespective of wire diameter (side and front).
With lock to assure the repeatability of the crimped connection.

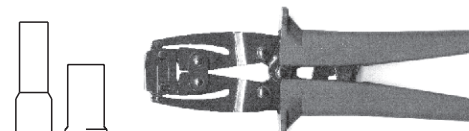
TYPE	PZ2,5H/0,5-2,5
Catalogue number	79-1202
Wire cross-section	0,5...2,5mm ²
Length	225mm
Weight	0,63kg



Manual crimping tool PZ6H/0,14-6 for sleeve terminals types H and HI*

With a single slot for crimping irrespective of the wire diameter (front slot).
With lock to assure the repeatability of the crimped connection.

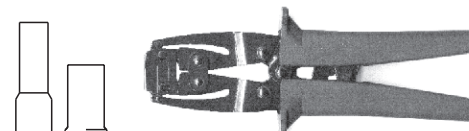
TYPE	PZ6H/0,14-6
Catalogue number	79-1204
Wire cross-section	0,14...6mm ²
Length	225mm
Weight	0,5kg



Manual crimping tool PZ10H/2,5-10 for crimping sleeve terminal types H and HI*

With a single slot for crimping irrespective of the wire diameter (front slot).
With lock to assure the repeatability of the crimped connection.

TYPE	PZ10H/2,5-10
Catalogue number	79-1206
Wire cross-section	2,5...10mm ²
Length	225mm
Weight	0,5kg



Manual crimping tool PZ/0,5-2,5 for sleeve terminals types H and HI*

TYPE	PZ/0,5-2,5
Catalogue number	79-1200
Wire cross-section	0,5...2,5mm ²
Length	150mm
Weight	0,16kg



Manual crimping tool PZ/0,5-16 for sleeve terminals types H and HI*

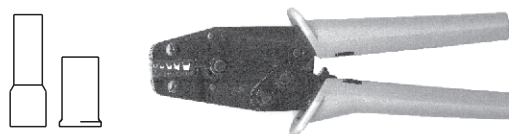
TYPE	PZ/0,5-16
Catalogue number	79-1201
Wire cross-section	0,5...16mm ²
Length	220mm
Weight	0,31kg



Manual crimping tool PZ4/0,5-6 for sleeve terminals types H and HI*

With lock to assure the repeatability of the crimped connection.

TYPE	PZ4/0,5-6
Catalogue number	79-1203
Wire cross-section	0,5...6mm ²
Length	220mm
Weight	0,38kg



Manual crimping tool PZ/10-35 for sleeve terminals types H and HI*

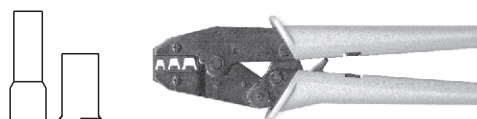
TYPE	PZ/10-35
Catalogue number	79-1205
Wire cross-section	10...35mm ²
Length	225mm
Weight	0,31kg



Manual crimping tool PZ/35 for sleeve terminals types H and HI*

With lock to assure the repeatability of the crimped connection.

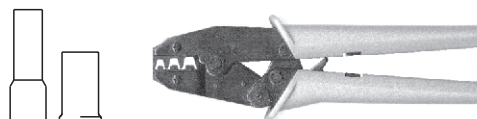
TYPE	PZ/35
Catalogue number	79-1208
Wire cross-section	16...35mm ²
Length	220mm
Weight	0,38kg



Manual crimping tool PZ25/10-25 for sleeve terminals types H and HI*

With lock to assure the repeatability of the crimped connection.

TYPE	PZ25/10-25
Catalogue number	79-1207
Wire cross-section	10...35mm ²
Length	220mm
Weight	0,38kg



Manual crimping tool PZ6/x2 for sleeve terminals types HI2x (2x 0,5...2x 6mm²)*

With lock to assure the repeatability of the crimped connection.

TYPE	PZ6/x2
Catalogue number	79-1210
Wire cross-section	0,5...6mm ²
Length	230mm
Weight	0,6kg

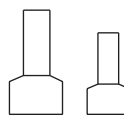


ELECTROTECHNICAL EQUIPMENT

Manual crimping tool PZ16/x2 for sleeve terminals types HI2x (2x 6...2x 16mm²)*

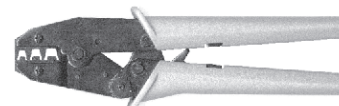
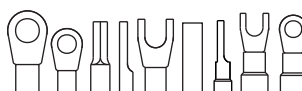
With lock to assure the repeatability of the crimped connection.

TYPE	PZ16/x2
Catalogue number	79-1211
Wire cross-section	6...16mm ²
Length	230mm
Weight	0,6kg



Manual crimping tool WZ2,5; WZ2,5I; WZ10; WZ10I for types KO, KI, KW, KŁ, KOI, KII, KWI, KŁI, WI, NI, GI terminals*

With lock to prevent incorrect crimping.

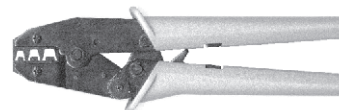


TYPE	WZ2,5	WZ2,5I	WZ10	WZ10I
Catalogue number	79-1307	79-1308	79-1309	79-1310
Wire cross-section	1...2,5mm ²	1...2,5mm ²	0,5...2,5mm ²	0,5...2,5mm ²
Length	225mm	225mm	150mm	150mm
Weight	0,5kg	0,5kg	0,16kg	0,16kg
Terminal type	KO, KI, KW, KŁ	KO, KOII, KWI, KŁI	KO, KOI, KW, KŁ	KOI, KII, KWI, KŁI WI, NI, GI

Manual crimping tool WZ115/4-6-10 for terminal types KO, KI, KW, KŁ*

With lock to prevent incorrect crimping.

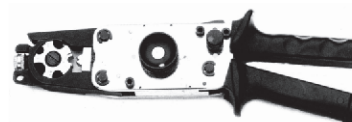
TYPE	WZ115/4-6-10
Catalogue number	79-1312
Wire cross-section	4...10mm ²
Length	225mm
Weight	0,5kg



Manual crimping tool WZ350/6-35-10 for terminal types KO, KI, KW, KŁ*

With lock to prevent incorrect crimping.

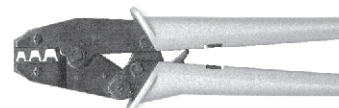
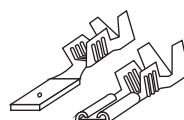
TYPE	WZ350/6-35
Catalogue number	79-1306
Wire cross-section	6...35mm ²
Length	300mm
Weight	1,3kg



Manual crimping tool WZ115/0,5-6 for inserts and non-insulated sleeves 4.8 and 6.3mm*

With lock to prevent incorrect crimping.

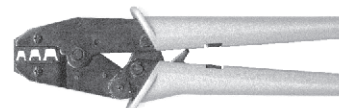
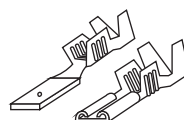
TYPE	WZ115/0,5-6
Catalogue number	79-1311
Wire cross-section	0,5...6mm ²
Length	225mm
Weight	0,5kg



Manual crimping tool WZ120/0,2-2,5 for inserts and non-insulated sleeves 4.8 and 6.3mm*

With lock to assure the repeatability of crimping.

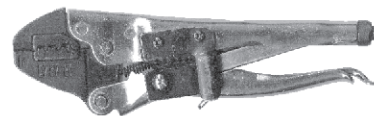
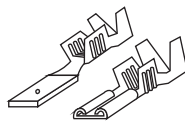
TYPE	WZ120/0,2-2,5
Catalogue number	79-1305
Wire cross-section	0,2...2,5mm ²
Length	205mm
Weight	0,4kg



Manual crimping tool WZ45/0.5-6 for inserts and non-insulated sleeves 4.8 and 6.3mm*

Enables removing insulation at ends and cutting wires. Useful for repair and service works.

TYPE	WZ45/0.5-6
Catalogue number	79-1303
Wire cross-section	0.5...6mm ²
Length	210mm
Weight	0,5kg



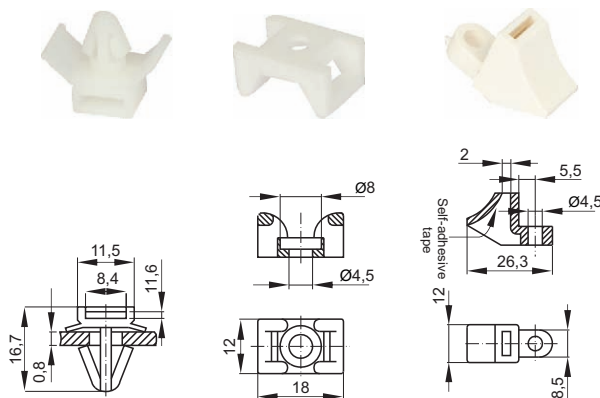
Manual crimping tool WZ6-25 for terminal types KO, KI, KW, KL*

TYPE	WZ6-25
Catalogue number	79-1313
Wire cross-section	6...25mm ²
Length	354mm
Weight	0,78kg

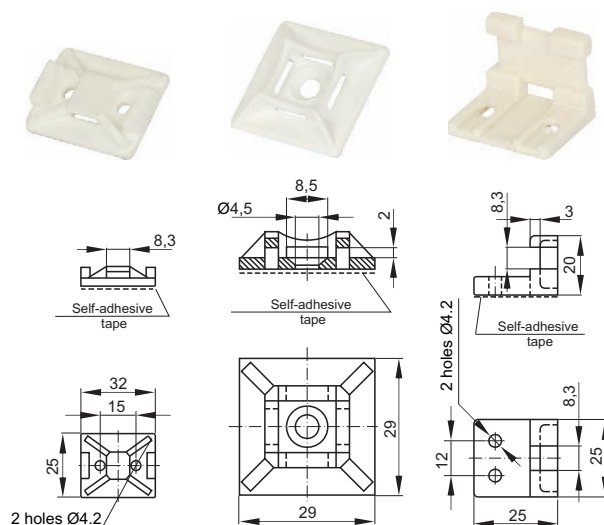


Fixing elements - for quick and permanent fixing of wire bundles to supporting structure

- Method of installation:
 – screwed: D6, E3, E4, E8, E9, E10
 – self-adhesive: E8S, E9S, E10S



TYPE	D6	E3	E4
Catalogue number	53-9232	53-9112	53-9122
Colour	colourless	colourless	colourless
Material	polyamide	polyamide	polyamide
Ambient temperature	-40...100°C	-40...100°C	-40...100°C
Package	20pcs.	20pcs.	20pcs.



TYPE	E8 E8S	E9 E9S	E10 E10S
Catalogue number	53-9142 53-9152	53-9162 53-9172	53-9182 53-9192
Colour	colourless	colourless	colourless
Material	polyamide	polyamide	polyamide
Ambient temperature	-40...100°C	-40...100°C	-40...100°C
Package	20pcs.	20pcs.	20pcs.

* per order only

ELECTROTECHNICAL EQUIPMENT

Glands

Glands are designed for protection of conductor introduced into the electric device. The construction of gland assures:

- sealing the passage of conductor through the gland
- sealing the opening for the gland

This separates the device interior from ambient conditions, i.e. moist, drops or jets of water, dust and aggressive atmosphere. Additionally, it protects the conductor against cutting with sharp edges of the opening. Depending on their design, the glands offer different IP protection level. The glands can be screwed into the device body or fixed in the opening using a nut. In both cases a gasket is necessary. Only a gland with a gasket assures the correct IP protection. The gaskets used in our glands have the same allowed operating temperature as the commonly used conductors with PVC insulation. Also, the gasket outside the gland is designed for operation within the same temperature range. The gland made of high-quality materials does not change its properties with time. Since it does not change its colour it is possible to keep the aesthetic look of the electrical system for a long time. The approximate gland equivalents with PG and metric thread.

PG	7	9	13,5	16	21	29	36	42	48
Metric	12	16	20	25	25	32	40	50	63

PG gland (IP68) - gland and gasket set

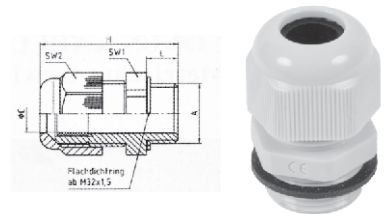
Plastic gland. Sold in packages with gasket without nut.

Technical data

Protection class	IP 68
Material	polyamide

Cat. no.	Type	Thread	Wire diameter	L	SW1	SW2	H	Package
59-050	PG7 (IP68)	7PG	3...6,5mm	8mm	15mm	15mm	28mm	50pcs.
59-051	PG9 (IP68)	9PG	4...8mm	8mm	19mm	19mm	30mm	50pcs.
59-052	PG11 (IP68)	11PG	5...10mm	8mm	22mm	22mm	32mm	50pcs.
59-053	PG13,5 (IP68)	13,5PG	6...12mm	9mm	24mm	24mm	36mm	50pcs.
59-054	PG16 (IP68)	16PG	10...14mm	10mm	27mm	27mm	38mm	50pcs.
59-055	PG21 (IP68)	21PG	13...18mm	11mm	33mm	33mm	41mm	50pcs.
59-056	PG29 (IP68)	29PG	18...25mm	11mm	42mm	42mm	49mm	50pcs.
59-057	PG36 (IP68)	36PG	22...32mm	13mm	53mm	53mm	58mm	20pcs.
59-058	PG42 (IP68)	42PG	30...38mm	13mm	60mm	60mm	61mm	10pcs.
59-059	PG48 (IP68)	48PG	34...44mm	14mm	65mm	65mm	62mm	10pcs.

- light grey-8
- grey-9
- black-3



Nut for PG (IP68) gland

Technical data

Material	polyamide
----------	-----------

Cat. no.	Type	Thread	H	Wrench size	Package
59-060	PG7 (IP68) nut	7PG	4,5mm	15mm	50pcs.
59-061	PG9 (IP68) nut	9PG	4,5mm	19mm	50pcs.
59-062	PG11 (IP68) nut	11PG	5,0mm	22mm	50pcs.
59-063	PG13,5 (IP68) nut	13,5PG	5,5mm	24mm	50pcs.
59-064	PG16 (IP68) nut	16PG	6,0mm	27mm	50pcs.
59-065	PG21 (IP68) nut	21PG	6,5mm	32mm	50pcs.
59-066	PG29 (IP68) nut	29PG	7,5mm	41mm	50pcs.
59-067	PG36 (IP68) nut	36PG	9,0mm	54mm	20pcs.
59-068	PG42 (IP68) nut	42PG	9,0mm	60mm	10pcs.
59-069	PG48 (IP68) nut	48PG	9,5mm	67mm	10pcs.

- light grey-8
- grey-9
- black-3



Gland with metric thread (IP68) - gland and gasket set

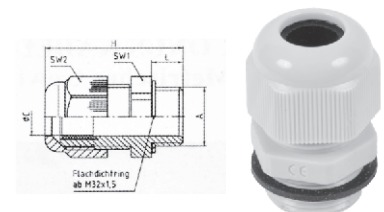
Plastic gland. Sold in packages with gasket without nut.

Technical data

Protection class	IP 68
Material	polyamide

Cat. no.	Type	Thread	Wire diameter	L	SW1	SW2	H	Package
59-070	M12	12mm	3...6,5mm	8mm	15mm	15mm	31mm	100pcs.
59-071	M16	16mm	5...10mm	8mm	20mm	20mm	35,5mm	100pcs.
59-072	M20	20mm	8...13mm	8mm	24mm	24mm	36mm	100pcs.
59-073	M25	25mm	11...17mm	8mm	29mm	29mm	43mm	50pcs.
59-074	M32	32mm	15...21mm	10mm	36mm	36mm	50mm	25pcs.
59-075	M40	40mm	19...28mm	10mm	46mm	46mm	51mm	10pcs.
59-076	M50	50mm	27...35mm	12mm	55mm	55mm	61,5mm	5pcs.
59-077	M63	63mm	32...42mm	12mm	68mm	68mm	65,5mm	5pcs.

- light grey-8
- grey-9
- black-3



Nut for gland with metric thread (IP68)

Technical data

Material	polyamide
----------	-----------

Cat. no.	Type	Thread	H	Wrench size	Package
59-080 □	M12 nut	12mm	4,5mm	18mm	100pcs.
59-081 □	M16 nut	16mm	5,0mm	22mm	100pcs.
59-082 □	M20 nut	20mm	5,5mm	26mm	100pcs.
59-083 □	M25 nut	25mm	6,0mm	32mm	50pcs.
59-084 □	M32 nut	32mm	6,5mm	42mm	25pcs.
59-085 □	M40 nut	40mm	7,0mm	54mm	10pcs.
59-086 □	M50 nut	50mm	7,0mm	66mm	5pcs.
59-087 □	M63 nut	63mm	9,0mm	80mm	5pcs.



- light grey-8 ○
- grey-9 ●
- black-3 ●

PG (IP55) gland

Technical data

Material	polyamide
Temperature	-40...+80°C
Protection class	IP 55
Colour	grey only ●

Cat. no.	Type	Thread	Ø body opening	Wire min. Ø	Wire max. Ø	Package
59-0078	PG7	P7	12,5mm	3,4mm	6mm	50pcs.
59-0098	PG9	P9	16mm	5mm	8mm	50pcs.
59-0118	PG11	P11	19mm	7mm	10,5mm	50pcs.
59-0138	PG13,5	P13,5	21mm	9mm	11mm	50pcs.
59-0168	PG16	P16	23mm	13mm	16mm	50pcs.
59-0218	PG21	P21	29mm	16mm	20mm	50pcs.
59-0298	PG29	P29	37mm	21mm	25mm	50pcs.
59-0368	PG36	P36	48mm	30mm	34mm	20pcs.
59-0428	PG42	P42	54mm	40mm	43mm	10pcs.
59-0488	PG48	P48	60mm	46mm	50mm	10pcs.



Choke

Technical data

Material	elastomer
Colour	white ○

Cat. no.	Type	Ø body opening	Wire min. Ø	Wire max. Ø	Package
20-6802	PG7	12,5mm	3,4mm	6mm	50pcs.



Caps

Cat. no.	Type	Package
59-1078	Z7PG	20pcs.
59-1098	Z9PG	20pcs.
59-1118	Z11PG	20pcs.
59-1138	Z13,5 PG	20pcs.
59-1168	Z16PG	20pcs.
59-1218	Z21PG	20pcs.
59-1298	Z29PG	20pcs.
59-1368	Z36PG	20pcs.
59-1428	Z42PG	20pcs.
59-1488	Z48PG	20pcs.

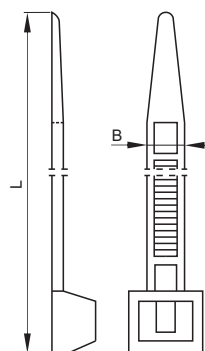
Mounting band TK

TK mounting bands are designed for tying electrical wires, hoses, tubes, etc. into bundles. They have a clip head and rack profile on the whole length. When tightened the articulated part of the head locks in the tothing. A loop formed in this way cannot be loosened. The tape can be additionally equipped with a TKO screw mount holder. The ties feature mechanic durability and shock-resistance. They are resistant to typical solvents, sea water, greases, moulds, etc. Cable ties are also used for mounting PV5, PV10 plates.

Technical data

Material	polyamide
Operating temperature	-40...+100°C
Colour	colourless

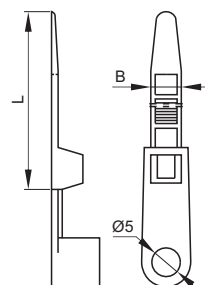
Cat. no.	Type	L	B	Max. bundle Ø	Package
53-1003	TK6/3	75mm	2,4mm	18mm	100pcs.
53-1013	TK9/3	96mm	2,5mm	20mm	100pcs.
53-1023	TK12/3	120mm	2,5mm	24mm	100pcs.
53-1043	TK16/3	160mm	2,5mm	40mm	100pcs.
53-1063	TK20/3	200mm	2,5mm	50mm	100pcs.
53-1072	TK30/3,6	290mm	3,6mm	76mm	100pcs.
53-1025	TK12/5	120mm	4,8mm	24mm	100pcs.
53-1045	TK16/5	160mm	4,8mm	40mm	100pcs.
53-1065	TK20/5	200mm	4,8mm	50mm	100pcs.
53-1075	TK30/5	280mm	4,8mm	76mm	100pcs.
53-1085	TK40/5	358mm	4,8mm	102mm	100pcs.
53-1078	TK30/8	280mm	7,6mm	76mm	100pcs.
53-1088	TK40/8	368mm	7,6mm	102mm	100pcs.
53-1098	TK50/8	550mm	8,0mm	140mm	100pcs.
53-1108	TK70/8	710mm	8,0mm	190mm	100pcs.
53-1099	TK50/9	550mm	9,0mm	150mm	100pcs.
53-1129	TK110/9	1170mm	9,0mm	330mm	100pcs.
53-1101	TK70/13	730mm	12,6mm	200mm	100pcs.
53-1111	TK100/13	1000mm	12,6mm	300mm	100pcs.



Mounting band TKO with screw hole

Thanks to the special holder the tie can be mounted on wall or other flat surface using a fixing bolt.


Cat. no.	Type	L	B	Max. bundle Ø	Package
53-5013	TKO9/3	98mm	2,4mm	20mm	100pcs.
53-5065	TKO20/5	200mm	4,8mm	50mm	100pcs.
53-5088	TKO40/8	380mm	7,8mm	104mm	100pcs.



Self-extinguishing PVC insulating hoses (insulating sheaths)

Use:

- insulation and labelling of wires,
- transmission of liquid or gas medium,
- for fuel pipes,
- sealing, protection of other wires (e.g. electric, hydraulic)

The sheaths are resistant to oils, acids, typical solvents used for cleaning electrical machines and devices. The insulating sheaths are made of primary PVC, are available in the following versions: transparent and in 11 colours, smooth surface, striated surface. Wall thickness: 0.3...4mm, other available on request Operating temperature: -30...+80°C, heat-resistance -25...+105°C. Compatibility with standards: PN-89/C89209; PN-73/E-29200. Tests and attestations: ZWAR W-wa, Katedra Wysokich Napięć Politechniki Łódzkiej, ZETOM Katowice, safety symbol certificate , UL. Material: PVC, self-extinguishing; on request conforming the Directive 2002/95/EC

Cat. no.	Type	Int. Ø	Wall thickness	Package
57-101□	1X0,4	1mm	0,4mm	200m
57-103□	2X0,5	2mm	0,5mm	200m
57-105□	3X0,5	3mm	0,5mm	100m
57-108□	4X0,5	4mm	0,5mm	100m
57-110□	5X05	5mm	0,5mm	100m
57-111□	6X05	6mm	0,5mm	50m
57-113□	7X0,5	7mm	0,5mm	50m
57-114□	8X0,5	8mm	0,5mm	50m
57-115□	9X1,0	9mm	1,0mm	50m
57-116□	10X1,0	10mm	1,0mm	50m
57-118□	11X1,0	11mm	1,0mm	50m
57-119□	12X1,0	12mm	1,0mm	50m
57-120□	13X1,0	13mm	1,0mm	50m
57-121□	14X1,0	14mm	1,0mm	50m
57-122□	15X0,1	15mm	1,0mm	50m
57-123□	16X1,0	16mm	1,0mm	50m
57-124□	17X1,0	17mm	1,0mm	50m
57-125□	18X1,0	18mm	1,0mm	50m
57-126□	19X1,0	19mm	1,0mm	50m
57-127□	20X1,0	20mm	1,0mm	50m
57-133□	21X1,0	21mm	1,0mm	50m
57-131□	22X1,0	22mm	1,0mm	50m
57-133□	23X1,0	23mm	1,0mm	50m
57-131□	24X1,0	24mm	1,0mm	50m
57-132□	25X1,1	25mm	1,1mm	25m
57-102□	26X1,1	26mm	1,1mm	25m
57-103□	27X1,1	27mm	1,1mm	25m
57-104□	28X1,1	28mm	1,1mm	25m
57-105□	29X1,1	29mm	1,1mm	25m
57-133□	30X1,1	30mm	1,1mm	25m
57-110□	31X1,1	31mm	1,1mm	25m
57-111□	32X1,1	32mm	1,1mm	25m
57-113□	33X1,2	33mm	1,2mm	25m
57-114□	34X1,2	34mm	1,2mm	25m
57-150□	35X1,2	35mm	1,2mm	25m



- transparent-0
- yellow-1 ●
- white-2 ○
- black-3 ●
- brown-4 ●
- green-5 ●
- blue-6 ●
- red-7 ●
- grey-8 ●
- orange-P ●

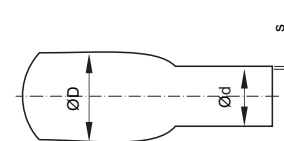
ELECTROTECHNICAL EQUIPMENT

Thin-walled thermo-shrinkable hoses RC

Thermo-shrinkable tubes can be used for easy solving of many problems in production areas, homes, workshops, etc. They are characterized by flexibility, quick shrinking, good electric and mechanical parameters, and are available at extremely attractive prices. Makes elements look aesthetic and gives high resistance to atmospheric, chemical and biological types of corrosion, moisture and abrasion. Easy to replace, more durable and more convenient for use than other shields. A shrinking tube assumes the shape of the item on which it is placed. The use of thermo-shrinkable tube allows the use of materials easily formed into complex shapes in corrosive environment.

Technical data

Hose length	1m
Operating temperature	-55...+105°C



Cat. no.	Type	ØD before shrinking	Ød after shrinking	s	Package 1m sections
60-104□	RC2,4/1,2	2,4mm	1,2mm	0,51mm	150pcs.
60-108□	RC3,2/1,6	3,2mm	1,6mm	0,51mm	100pcs.
60-112□	RC4/1	4,0mm	1,0mm	1,00mm	100pcs.
60-116□	RC4,8/2,4	4,8mm	2,4mm	0,51mm	100pcs.
60-120□	RC6,4/3,2	6,4mm	3,2mm	0,64mm	100pcs.
60-124□	RC8/2	8,0mm	2,0mm	1,00mm	100pcs.
60-128□	RC9,5/4,8	9,5mm	4,8mm	0,64mm	100pcs.
60-132□	RC12,7/6,4	12,7mm	6,4mm	0,64mm	100pcs.
60-136□	RC19/9,5	19,0mm	9,5mm	0,76mm	50pcs.
60-140□	RC25,4/12,7	25,4mm	12,7mm	0,89mm	50pcs.
60-144□	RC38/19	38mm	19,0mm	1,02mm	50pcs.
60-148□	RC51/25,5	51mm	25,5mm	1,14mm	40pcs.
60-152□	RC76/38	76mm	38,0mm	1,27mm	20pcs.
60-156□	RC102/51	102mm	51,0mm	1,40mm	20pcs.

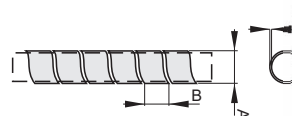


- transparent-0
- yellow-1 ●
- white-2 ○
- black-3 ●
- brown-4 ●
- green-5 ●
- blue-6 ●
- red-7 ●
- grey-8 ●
- violet-F ●
- yellow/green-Z ●
- orange-P ●
- multi-colour-R

WS spiral hoses

The hose is designed for binding electric wires, hydraulic and pneumatic ducts, etc. The bundle of wires braided with the hose can be branched out at any point. Hoses are resistant to typical solvents, greases, oils, sea water, moulds, etc. Material: PVC, self-conforming the Directive 2002/95/EC. Temperature range: -20...+70°C. Colour: black (other colour available on request)

Cat. no.	Type	Bundle diameter	A	B	C	Package
55-1013	WS3	3...10mm	3mm	4mm	0,5mm	100pcs.
55-1113	WS5	5...20mm	5mm	6mm	0,6mm	100pcs.
55-1203	WS10	10...30mm	10mm	11mm	0,9mm	50pcs.
55-1303	WS15	15...40mm	15mm	15mm	1,0mm	50pcs.
55-1403	WS20	20...60mm	20mm	19mm	1,3mm	50pcs.

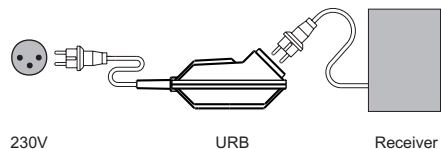


URB extension cord with differential current switch

The URB extension cord with differential current switch (the "URB") is used for increasing the level of electric shock protection when feeding one or two consumers. URB enables decentralized electric shock protection, improves the reliability of power supply and is easy to install. Recommended to all users who want to improve the site's existing shock protection, e.g.:

- In "wet" rooms, i.e. laundry rooms, bathrooms, basements, boiler rooms, kitchens,
- In campers, at camp sites, on boats, in harbours,
- Outside buildings,
- In farm facilities.

TYPE	URB
Catalogue number	25-6101
Rated voltage	230V
Rated current	16A
Rated differential current	30mA
Protection class	IP44*
Operating temperature	-25...+45°C
Impulse strength	Per DIN VDE 0664 part 1
Short-circuit strength	10kA
Package	1pc.





PK POKÓJ
Rok zał. 1951

ul. Warecka 1, 91-202 Łódź, POLAND
tel. (+48 42) 25 47 853...856
fax (+48 42) 25 47 859; 869
e-mail: market@pokoj.com.pl
www.pokoj.com.pl

The manufacturer reserves the right to make changes in the technical data contained in this catalogue.